



Course Syllabus

Course Number: EID 271

Course Title: Materiality in Interior Design

Term: Spring 2026

Course Credits: 4

Prerequisites: EID 200, 202, 312 or Instructor's permission

Class type: In-Person

Class Meeting Days: TThu

Class Meeting Hours: 1:30 – 3:50 pm | Class Location: Eiben 108

Instructor Name: Junghwa Suh, DArch

Email: junghwa.suh@chaminade.edu

Phone: 808.739.8590

Office Location: Eiben 212

Office Hours: MW 12:30 - 1:20 pm

Course Description

EID 271 Materiality in Interior Design (4cr) is a studio course that examines how design concepts are translated through materiality, focusing on the integration of appropriate materials, finishes, and products in the design of interior environments—both commercial and residential. The studio investigates 'materiality' as means to develop interior space. Material characteristics, specifications, installation methods, maintenance requirements, and sustainability features will be explored within the context of a comprehensive design project.

Prerequisites: EID 201, EID 202, and EID 217 (which may be taken concurrently), EID 312 (preferably taken) or consent of the instructor

Course Content

Lectures | Exercises | Assignments | Projects

Class Format

Materiality:

Over the duration of the semester, we will examine various aspects of materiality, applying the principles presented in class to a comprehensive, semester-long design project. To encourage creative thinking and design innovation, there will be a special emphasis on how the building typology will evolve in the future. As this is primarily a studio-format course, students are expected to work intensively on their projects during the entire class period, whether they are scheduled for desk critiques or not.

In addition to studio work, various materials will be discussed and researched, learning how they are integrated into a design project. Students will be given questions to learn about various interior material characteristics and their appropriate use. It is encouraged for students to use various literature, web, and professional resources, so they develop a clear understanding of various interior materials' appropriate and effective use.

Students should become familiar with the range and availability of products on the island and demonstrate understanding of appropriate material use in their projects. Project specifications should include as many locally-sourced and sustainable items as possible. You are also required to specify particular materials that work with your concept and goals to drive your design. This will come from your research of the project context in the beginning of the semester, then you will explore characteristics, specifications, installation methods, maintenance requirements, and sustainability features of your selected material throughout the semester.

Design Studio Project:

The comprehensive design project will explore and develop the following aspects: pre-design research (precedent studies, client profile, existing documentation, site analysis); design conceptualization (ideation); design strategy (translation); programming; space planning and specifications (synthesis).

Particular emphasis will be placed on design development with respect to materiality, as well as the selection of components, such as cabinetry, doors, windows, hardware, fixtures, and equipment.

In preparation for this course, students must possess basic skills in technical drawing and model-building, which have been developed from your previous design classes. For the first half of the semester, students are expected to explore ideas and concepts through hand drawing and sketching, as well as build study models as part of your process work. At mid-semester, your schematic design drawings will be translated and further developed in AutoCAD, using a digital template that will be provided for you.

At the end of the semester, there will be a final review of your completed design project in class. In addition to this presentation, students are required to present their project from this course for the 200-level practicum review. The purpose of the practicum is to assess both your ability to synthesize what you have learned thus far in the program and actively apply that knowledge in a design capacity, as well as your readiness for the upper division E+ID courses. The review is scheduled for the week after finals, so please prepare to remain on-island after the semester is over.

Course Learning Outcomes

By the end of this course, students should be able to:

- Ideation & Translation – Students should be able to think conceptually: develop and research ideas, translate the idea into design strategy, and communicate the idea through the language of interior design [CIDA standards 4, 8, 9, 10, 11, 12] [PO 2,3,5] - DEVELOPING
- Materials & Finishes – Demonstrate knowledge about a range of materials and finishes typically used in interior design, including their performance characteristics and applications of given project context [CIDA standard 13] [PO 2,3,4] - EMERGING
- Space Planning – Students should be able to develop an effective and efficient interior spatial layout based on project program & design concept [CIDA standard 7,8] [PO 2,3] –DEVELOPING
- Technical Skills – Students should be able to execute a design development drawing package; develop preliminary specifications as well as 3D representations (physical & digital) of their design project [CIDA standard 9,13,15] [PO 2,3,4,5] – DEVELOPING
- Prioritization of Design Criteria – Coordinate & prioritize design choices based on health, welfare, safety, and sustainability criteria [CIDA standard 14,16] [PO 2, 4] – EMERGING

EID Program Outcomes

1) Professionalism – understand, apply and participate in ethical design practices on a personal, project, peer and industry-wide level. (CIDA 5,6,9)

2) Process – ability to identify problems/challenges and demonstrate an understanding of the complete design process from inception to installation, execute documentation supporting design decisions and effect comprehensive, creative, focused and functional design solutions. (CIDA 4, 6, 9, 10, 11, 12, 13, 14,16)

3) Principles & Priorities – integration of pedagogy, research, historic contexts, theory, and interdisciplinary collaboration to effectively and creatively analyze, evaluate and execute best design practices resulting in functional and aesthetically inspiring design. (CIDA 8, 9, 10, 12, 13, 14)

4) Public & Environmental Protection – demonstrate an understanding of the concepts, resources and implications of design decisions relative to the human interaction, technological impact and ecological balance of the built environment. (CIDA 4, 7, 12, 13, 14)

5) Presentation – demonstrate ability to communicate design concepts and problem-solving justifications through written, oral and a variety of visual media. (CIDA 6,9)

Assessment

Attendance/Participation	10 %
Materiality Research Exercises	35 %
Design Project	55 %
Total	100 %

Grading Scale: A: 90%- 100%; B: 80%- 89%; C: 70%- 79%; D: 60%- 69%; F: below 59%

Evaluation Criteria

- Quality and creativity of design work
- Thoroughness and craft in presentation
- Technical Skills & Proficiency
- Contribution of ideas and engagement in class
- Willingness to experiment and to challenge yourself
- Rigor
- Professional demeanor

Required Learning Tools & Materials

- All materials from EID 200 and 202 courses
- Personal design book
- Use of AutoCAD
- Use of 3D modeling tool (SketchUp)

Technical Assistance for Canvas Users

Search for help on specific topics at help.instructure.com. [Chat live with Canvas Support 24/7/365](#). Watch this [video to get you started](#) with online guides and tutorials. Contact the Chaminade IT Helpdesk for technical issues: helpdesk@chaminade.edu, or call (808) 735-4855

Credit Hour Policy

This is a 4 credit hour course requiring 180 clock hours of student engagement, per the official CUH Credit Hour Policy. Students enrolled in this course are anticipated to spend the following number of hours per class activity:

Educational activity	Expected hours of Student Engagement:
Course attendance/Lecture	96
Materiality Research	24
Project phase 1	10
Project phase 2	20
Project phase 3	30
Total hours:	180

Connection to the Characteristics of a [Marianist Education](#)

The following are characteristics of the approach to education engaged at Marianist schools, including Chaminade University:

- Educate for formation in faith:
 - Trust in yourself and your instructor to do a good job to the best ability.
- Provide an integral quality education
 - Interactive learning between students and an instructor and students and students is a key for the success of digesting the information.
 - Proactive attitude towards learning is important.
- Educate in family spirit
 - Success can be achieved by harnessing everyone's growth together
- Educate for service, justice and peace
 - Be mindful of how your design may impact users, occupants and the environment
- Educate for adaptation and change
 - As people grow and change, space needs to respond to the changes of people, environment and society.

Native Hawaiian Values

Education is an integral value in both Marianist and Native Hawaiian culture. Both recognize the transformative effect of a well-rounded, value-centered education on society, particularly in seeking justice for the marginalized, the forgotten, and the oppressed, always with an eye toward God (Ke Akua). This is reflected in the 'Olelo No'eau (Hawaiian proverbs) and Marianist core beliefs:

1. Educate for Formation in Faith (Mana) E ola au i ke akua ('Olelo No'eau 364) May I live by God.
2. Provide an Integral, Quality Education (Na'auao) Lawe i ka ma'alea a kū'ono'ono ('Olelo

No'eau 1957) Acquire skill and make it deep.

3. Educate in Family Spirit ('Ohana) 'Ike aku, 'ike mai, kōkua aku kōkua mai; pela iho la ka nohana 'ohana ('Ōlelo No'eau 1200). Recognize others, be recognized, help others, be helped; such is a family relationship.

4. Educate for Service, Justice and Peace (Aloha) Ka lama kū o ka no'eau ('Ōlelo No'eau 1430) Education is the standing torch of wisdom.

5. Educate for Adaptation and Change (Aina) 'A'ohe pau ka 'ike i ka hālau ho'okahi ('Ōlelo No'eau 203) All knowledge is not taught in the same school



Code of Conduct

13.1. Attendance Policy

Students are expected to attend all courses for which they are registered. If you are not feeling well, please do not come to campus. Students should notify their instructors when illness or other extenuating circumstances prevent them from attending class and make arrangements to complete missed assignments. Notification may be done by emailing the instructor's Chaminade email address or calling the instructor's campus extension. It is the instructor's prerogative to modify deadlines of course requirements accordingly. Any student who stops attending a course without officially withdrawing may receive a failing grade.

- Unexcused absences equivalent to more than a week of classes may lead to a grade reduction for the course.
- Any unexcused absence of two consecutive weeks or more may result in being withdrawn from the course by the instructor, although the instructor is not required to withdraw students in that scenario. Repeated absences put students at risk of failing grades.
- Six unexcused tardiness will result in one letter grade demotion for the course.

13.2. Late Work Policy

Requests for extensions due to extenuating circumstances (medical problems, for example) will be considered but in general work received after the deadline will not be graded. Computer problems are not an excuse for late work.

13.3. Grades of "Incomplete"

Students and instructors may negotiate an incomplete grade when there are specific justifying circumstances. An Incomplete Contract (available from the Divisional Secretary and the Portal) must be completed. When submitting a grade the "I" will be accompanied by the alternative grade that will automatically be assigned after 90 days. These include IB, IC, ID, and IF. If only an "I" is submitted the default grade is F. The completion of the work, evaluation, and reporting of the final grade is due within 90 days after the end of the semester or term. This limit may not be extended.

13.4. Generative AI Policy

Writing/Paper/design requirements and formatting will be discussed during the course when the assignment is given. We recognize that there are various generative AI tools available. We recommend that you use them ethically. This means you may use them for initial ideation, but you will NOT let the tools do the assignments for you. The instructor reserves the right to a) inquire if a student is using AI should that be suspected, b) ask a student to redo their assignments with point deductions, or c) give a grade of 0 for that assignment.

13.5. Cell phones, tablets, and laptops

Music Devices and Cellular Phones: Unless specifically permitted by your instructor, use of music devices and cell phones is prohibited during all Environmental + Interior Design classes, as it is discourteous and may lead to suspicion of academic misconduct. Students unable to comply will be asked to leave class. Out of consideration for your classmates, please set your cell phone to silent mode during class. Students are encouraged to bring laptops or tablets to class as the instructor will assign online activities and readings that will require the use of a laptop or tablet. Laptops and tablets should not be misused, such as by checking distracting websites. Use your best judgment and respect your classmates and instructor.

13.6. Academic Honesty

Academic honesty is an essential aspect of all learning, scholarship, and research. It is one of the values regarded most highly by academic communities throughout the world. Violations of the principle of academic honesty are extremely serious and will not be tolerated.

Students are responsible for promoting academic honesty at Chaminade by not participating in any act of dishonesty and by reporting any incidence of academic dishonesty to an instructor or to a University official. Academic dishonesty may include theft of records or examinations, alteration of grades, and plagiarism, in addition to more obvious dishonesty.

Questions of academic dishonesty in a particular class are first reviewed by the instructor, who must make a report with recommendations to the Dean of the Academic Division. Punishment for academic dishonesty will be determined by the instructor and the Dean of Academic Division and may include an "F" grade for the work in question, an "F" grade for the course, suspension, or dismissal from the University.

For the most up-to-date information, please refer to the [Academic Honesty Policy](#) on the Chaminade University Catalog website.

13.7. Title IX and Nondiscrimination Statement

Chaminade University of Honolulu is committed to providing a learning, working and living environment that promotes the dignity of all people, inclusivity and mutual respect and is free of all forms of sex discrimination and gender-based violence, including sexual assault, sexual harassment, gender-based harassment, domestic violence, dating violence, and stalking. As a member of the University faculty, I am required to immediately report any incident of sex discrimination or gender-based violence to the campus Title IX Coordinator. For pregnant and parenting students, I am also obligated to provide you with similar resources for support and protections available to you. My goal is to make sure that you are aware of the range of options available to you and have access to the resources and support you need.

Nondiscrimination Policy & Notice of Nondiscrimination

The university is committed to comply with all State and Federal statutes, rules, and regulations which prohibit discrimination. The university is committed to a policy of nondiscrimination on the basis of race, sex, gender identity and expression, age, religion, color, national origin (including shared ancestry and ethnic characteristics), ancestry, citizenship, disability, genetic information, marital status, breastfeeding, arrest and court record (except as permissible under State law), sexual orientation, or status as a covered veteran. Inquiries about Title IX or general Civil Rights concerns may be referred to the University's Title IX Coordinator, the U.S. Department of Education's Office for Civil Rights, or both and contact information may be found [HERE](#). *On-campus Confidential Resources may also be found here at [CAMPUS CONFIDENTIAL RESOURCES](#).*

The University's Nondiscrimination Policy and Grievance Procedures can be located on the University webpage at: <https://chaminade.edu/compliance/title-ix-nondiscrimination-policies-procedures/>.

To report information about conduct that may constitute sex discrimination or make a complaint of sex discrimination under Title IX, please refer to the [Campus Incident Report form](#). Chaminade University of Honolulu prohibits sex discrimination in any education program or activity that it operates.

The NOTICE of NONDISCRIMINATION can be found here: [Notice of Nondiscrimination](#).

Hazing Prevention Resources and Athlete Helpline:

Assists athletes, parents, coaches, and any allies interested in ensuring physical and mental safety for sports communities by offering confidential emotional support, crisis intervention, informational athlete-focused resources, and guidance related to concerns about any type of abuse—including hazing.

Chaminade University's Hazing Policy:

<https://catalog.chaminade.edu/studenthandbook/codeofconduct>

<https://hazingpreventionnetwork.org/athlete-helpline/>

<https://hazingpreventionnetwork.org/how-to-report-hazing/>

Basic Needs Resources: <https://chaminade.edu/basic-needs/>

13.8. Campus Safety/ SafeSwords

A program for students, faculty and staff, who may feel uncomfortable or unsafe walking alone on campus, at any time of the day. Call security, and a security professional will meet you at your location on campus. The security professional will escort you to your residence hall, car, etc. Students may utilize this when walking to and from night classes around campus or after late night events.

[SafeSwords Webpage](#)

13.9. CUH Alert Emergency Notification

To get the latest emergency communication from Chaminade University, students' cell numbers will be connected to Chaminade's emergency notification text system. When you log in to the Chaminade portal, you will be asked to provide some emergency contact information. If you provide a cellphone number, you will receive a text from our emergency notification system asking you to confirm your number. You must respond to that message to complete your registration and get emergency notifications on your phone.

13.10. Assessment for Student Work

With the goal of continuing to improve the quality of educational services offered to students, Chaminade University conducts assessments of student achievement of course, program, and institutional learning outcomes. Student work is used anonymously as the basis of these assessments, and the work you do in this course may be used in these assessment efforts.

13.11. Student with Disabilities Statement

Chaminade University of Honolulu offers accommodations for all actively enrolled students with disabilities in compliance with Section 504 of the Rehabilitation Act of 1973, the Americans with Disabilities Act (ADA) of 1990, and the ADA Amendments Act (2008).

Students are responsible for contacting Kokua Ike: Center for Student Learning to schedule an appointment. Verification of their disability will be requested through appropriate documentation and once received it will take up to approximately 2–3 weeks to review them. Appropriate paperwork will be completed by the student before notification will be sent out to their instructors. Accommodation paperwork will not be automatically sent out to instructors each semester, as the student is responsible to notify Kokua Ike via email at ada@chaminade.edu each semester if changes or notifications are needed.

13.11. Kōkua 'Ike: Tutoring & Learning Services

Chaminade is proud to offer free, one-on-one tutoring and writing assistance to all students. Tutoring and writing help is available on campus at Kōkua 'Ike: Center for Student Learning in a variety of subjects (including, but are not limited to biology, chemistry, math, nursing, English, etc.) from trained Peer and Professional Tutors. Please check [Kōkua 'Ike's](#) website for the latest times, list of drop-in hours, and information on scheduling an appointment. Free online tutoring is also available via TutorMe. Tutor Me can be accessed 24/7 from your Canvas account. Simply click on Account > TutorMe. For more information, please contact Kōkua 'Ike at tutoring@chaminade.edu or 808-739-8305.

13.12. Syllabus & Course map Changes

This syllabus is a guide to the class and will be adhered to as much as possible; however, I reserve the right to make changes as I see fit, so long as they do not create an additional undue burden on the student.

PROFESSIONAL CODE OF CONDUCT

Students of Chaminade University's Environmental + Interior Design Program (CUH-EID) are expected to maintain professional standards of behavior during their tenure here. As guidelines, CUH-EID has adopted the following protocols.

CLASSROOM BEHAVIOR

- Wearing a facemask/covering is voluntary during the class session. If you don't feel well or you are ill, please stay at home and get well first.
- Cell phone use in class (calls, texting, emailing) is prohibited; cell phone ringers must be turned off at all times except in case of emergency. If making a call is absolutely necessary, then please step outside the classroom to do so.
- When class is in session, you are expected to show courtesy and respect to your instructor as well as to other students. If your behavior is deemed disruptive, you will be asked to leave the class and consequently receive an unexcused absence for that day.
- All assigned work should be completed, presented, or submitted before/on the assigned day and time. Working on homework, presentations, etc., while an instructor or guest speaker is speaking, or while peers are presenting in class, is disrespectful and will NOT be tolerated.

CLASS ATTENDANCE & ASSIGNMENTS

- Three unexcused absences during the course of the semester will result in one letter grade demotion for the course (i.e. if your grade is "B," it can be demoted to "C"). Similarly, six unexcused tardiness

will result in one letter grade demotion for the course.

- Failure to attend presentations or exams, without informing the instructor in advance, will result in an F for the exam/project; failure to attend a final presentation, final exam or final project submission without informing the instructor in advance will result in an F for the course.
- Students should always inform the instructor 2 days in advance (in writing or by email) of any anticipated absences, tardiness, or irregular/unanticipated scheduling conflicts (e.g., jury duty, team sport commitment, etc.) Do not schedule medical or personal appointments during scheduled class time.
- Assignments from a missed class must be made up by the next class meeting unless an extension has been arranged with the instructor. Do not expect an instructor to repeat a lecture for you; students must arrange with a fellow student to pick up class materials, lecture notes, homework assignments, exercises, etc.
- Assignments handed in late will not be accepted unless arranged in advance with the instructor; 5 points will be deducted from the total number of points for each day the assignment is late beyond the prescribed due date.
- If you have any questions or concerns, please contact me via email. I will respond to your email within a day or two. You will receive feedback on your assignments, projects, and exams within one week of submission. I will not be checking the work emails during the weekends starting from 5 pm on Fridays, so please do not expect any email responses during the weekends.

USE OF FACILITIES

- Only beverages in sealed containers are allowed in the EID-assigned studios/classrooms; in rooms with computers, beverages must be kept on the floor, away from the computer equipment and outlets. Hydration is very important during class. You may step out of the classroom if you need to drink water from your container.
- NO Meals (snacks, fruits, any food) allowed in the studio/classroom.
- Clean up your work area before & after yourselves in digital studios, classrooms, the materials library, the kitchen area, the resource center, and the print room.
- Any damage to workstations or equipment will be charged to the student; if the person cannot be readily determined, the class(es) using the studio/classroom will bear the expense of the repairs collectively.

PERSONAL STANDARDS

- Students should dress in a professional manner when attending any public functions on behalf of the school, on field trips/site visits, or when guests visit the class. You are representing the EID Program, Chaminade University, and most importantly, yourself to your future constituents: employers, colleagues, contractors, clients, etc.
- Students must be prepared with all materials required for the class; the inability to work during the

class will result in an unexcused absence for the day.

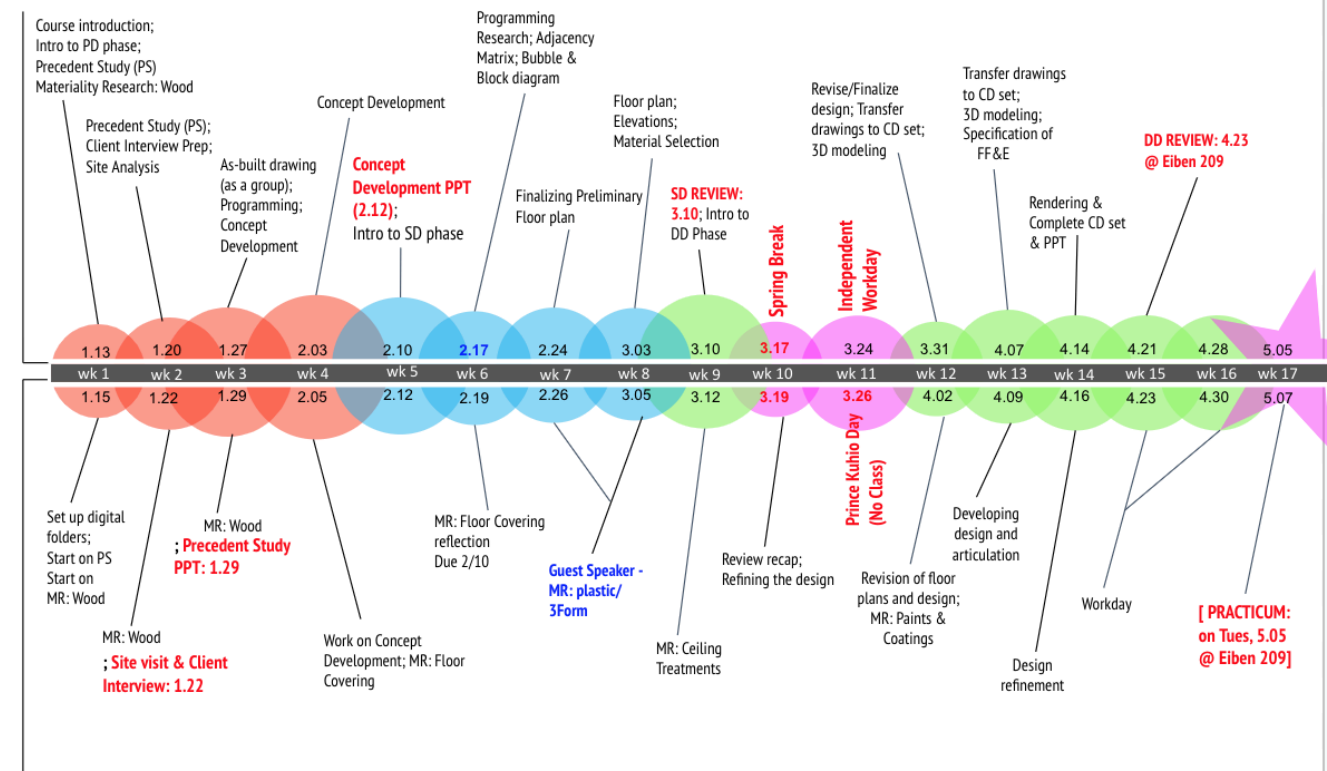
- Cheating on any exam, exercises, or assignments will result in automatic failure of the course.

I have read, understand, and agree to the terms of the syllabus, course map, and Code of Conduct.

Student Signature: _____ Date: _____

CHAMINADE UNIVERSITY of HONOLULU
ENVIRONMENTAL + INTERIOR DESIGN
EID 271: Materiality in Interior Design | SPRING 2026
Instructor: Dr. Junghwa K. Suh

EID 271 Design Project



EID 271 Materiality Research (MR)

n.b. Course content and scheduling are subject to change at the instructor's discretion in the interest of sound pedagogy.