



Chaminade
University
OF HONOLULU

Course Syllabus

[Chaminade University Honolulu](http://www.chaminade.edu)

3140 Waialae Avenue - Honolulu, HI 96816

www.chaminade.edu

Course Number: BI-162L-03-1

Course Title: General Microbiology laboratory.

Department Name: Biology

College/School/Division Name: NSM

Term: Spring 26

Course Credits: 1

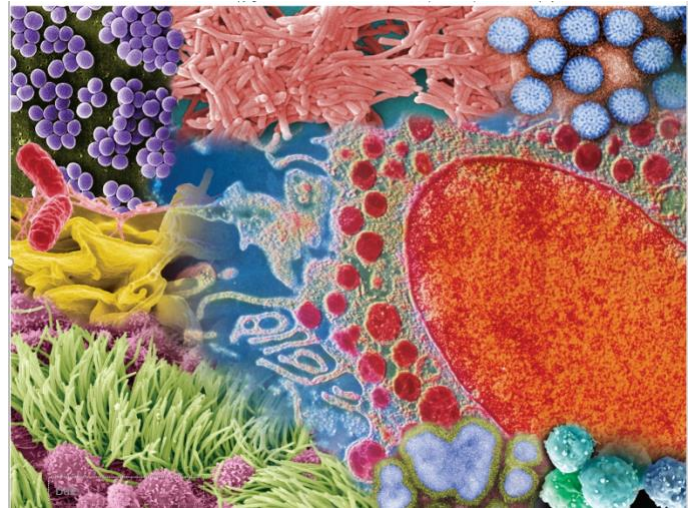
Class Meeting Days: Wednesday

Class Meeting Hours: 2:30PM - 5:20PM

Class Location: Henry Hall, Lab 0

Instructor: Julia Hunckler

Email: julia.hunckler@chaminade.edu



University Course Catalog Description

Laboratory course to accompany BI 162. Examination, cultivation, and identification of microorganisms pertinent to human health. Techniques covered include asepsis, isolation, culturing, and identification of microorganisms. Materials intensive fee applies

Course Overview

Introduction to microbiology laboratory with an emphasis on clinical approach relevant to health professionals. The laboratory is designed to provide you with hands-on applications of the concepts explored in class. In addition, computer simulations will provide opportunities to reinforce, and at times to go beyond, the techniques explored in the lab.

Marianist Values

This class represents one component of your education at Chaminade University of Honolulu. An

education in the Marianist Tradition is marked by five principles and you should take every opportunity possible to reflect upon the role of these characteristics in your education and development:

1. Education for formation in faith
2. Provide an integral, quality education
3. Educate in family spirit
4. Educate for service, justice and peace
5. Educate for adaptation and change

Native Hawaiian Values

Education is an integral value in both Marianist and Native Hawaiian culture. Both recognize the transformative effect of a well-rounded, value-centered education on society, particularly in seeking justice for the marginalized, the forgotten, and the oppressed, always with an eye toward God (Ke Akua). This is reflected in the 'Ōlelo No'eau (Hawaiian proverbs) and Marianist core beliefs:

1. Educate for Formation in Faith (Mana) E ola au i ke akua ('Ōlelo No'eau 364) May I live by God
2. Provide an Integral, Quality Education (Na'auao) Lawe i ka ma'alea a kū'ono'ono ('Ōlelo No'eau 1957) Acquire skill and make it deep
3. Educate in Family Spirit ('Ohana) 'Ike aku, 'ike mai, kōkua aku kōkua mai; pela iho la ka nohana 'ohana ('Ōlelo No'eau 1200) Recognize others, be recognized, help others, be helped; such is a family relationship
4. Educate for Service, Justice and Peace (Aloha) Ka lama kū o ka no'eau ('Ōlelo No'eau 1430) Education is the standing torch of wisdom
5. Educate for Adaptation and Change (Aina) 'A'ohe pau ka 'ike i ka hālau ho'okahi ('Ōlelo No'eau 203) All knowledge is not taught in the same school

Learning Outcomes

Biology program learning outcome

1. Explain fundamental biological concepts and their interrelationships across various levels of biological organization, from molecules to ecosystems, including cell biology, genetics, evolution, physiology, and ecology.
2. Perform laboratory, field and computational techniques relevant to biological research, including accurate data collection, analysis, and interpretation.
3. Design and conduct scientific investigations using advanced methodologies, technologies, and resources, and communicate results effectively to professional and lay audiences.
4. Make ethically informed decisions in biological research and practice, considering bioethics, environmental ethics informed by indigenous and traditional knowledge and practices.
5. Analyze societal challenges related to health and the environment through the lens of biological science, recognizing how biological knowledge and associated career paths can contribute to studying, addressing and solving these challenges.

BI 162L learning outcomes

		In alignment with:		
<i>Upon Completion of this laboratory course, students will be able to:</i>		Program outcome link.	Marianist values	Hawaiian values
1	Apply safe laboratory practices	2	2,3,4,5	2,3,4,5
2	List, explain and experience the steps of the scientific method	2	2,3,4,5	2,3,4,5
3	Use microscopy techniques to observe bacteria and other relevant microorganisms.	2	2,3,4,5	2,3,4,5
4	Experiment with various methods of microbial culture, test various antimicrobial substances and discuss their importance and limitations	2,3,4	2,3,4,5	2,3,4,5
5	Make use of various techniques to identify microorganisms	2,3	2,3,4,5	2,3,4,5
6	Apply laboratory techniques to quantify microorganisms	2, 3	2,3,4,5	2,3,4,5

Course Prerequisites

Prerequisites: priority will be given to students accepted in the CUH Nursing Major.

Required Learning Materials

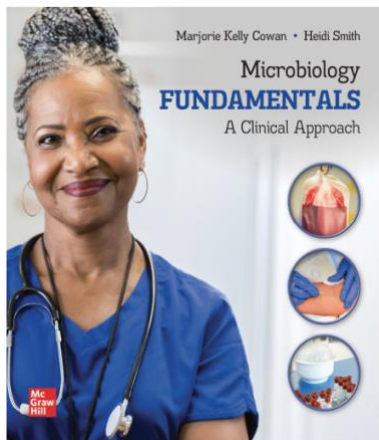
This laboratory course will use the material required for the class BI162. If you are not taking the class, you still will need to purchase the access to McGraw-Hill "Connect" with the e-text

Microbiology Fundamentals: A Clinical Approach. 4rd Edition. ISBN: 1260786048 Release: 2025

The most economical option is to buy the ACCESS CARD to connect (includes the e-book) from either our bookstore, the McGraw hill link in Canvas, or directly from McGraw Hill at [McGraw Hill Higher Education \(mheducation.com\)](https://mheducation.com)

Additional material will be supplied as needed using canvas.

(Note: for two weeks you can start by using free access to connect.)



Course Website:

<https://chaminade.instructure.com/courses/44986>

Technical Assistance for Canvas Users:

- Search for help on specific topics or get tips in [Canvas Students](#)
- [Live chat with Canvas Support for students](#)
- Canvas Support Hotline for students: +1-833-209-6111
- Watch this [video to get you started](#)
- [Online tutorials](#): click on “Students” role to access tutorials
- Contact the Chaminade IT Helpdesk for technical issues: helpdesk@chaminade.edu or call (808) 735-4855

Kōkua ‘Ike: Tutoring & Learning Services

Chaminade is proud to offer free, one-on-one tutoring and writing assistance to all students. Tutoring and writing help is available on campus at Kōkua ‘Ike: Center for Student Learning in a variety of subjects (including, but are not limited to biology, chemistry, math, nursing, English, etc.) from trained Peer and Professional Tutors. Please check [Kōkua ‘Ike’s](#) website for the latest times, list of drop-in hours, and information on scheduling an appointment. Free online tutoring is also available via TutorMe. Tutor Me can be accessed 24/7 from your Canvas account. Simply click on Account > TutorMe. For more information, please contact Kōkua ‘Ike at tutoring@chaminade.edu or 808-739-8305.

Course Policies

Late Work Policy

Assignments must be submitted by the due date. In case of issues, contact the instructor as soon as possible.

Assessment

	% Of Grade	Due Date
Assignments/Quizzes	20	~Weekly
Midterm	35	3/3/2026 (tentative date)
Final	35	4/28/2026
Attendance/participation	10	Ongoing evaluation
Total	100	

Grading Scale

Letter grades are given in all courses except those conducted on a credit/no credit basis. Grades are calculated from the student's daily work, class participation, quizzes, tests, term papers, reports and the final examination. They are interpreted as follows:

- A Outstanding scholarship and an unusual degree of intellectual initiative
- B Superior work done in a consistent and intellectual manner
- C Average grade indicating a competent grasp of subject matter
- D Inferior work of the lowest passing grade, not satisfactory for fulfillment of prerequisite course work
- F Failed to grasp the minimum subject matter; no credit given

Grades of "Incomplete"

As per catalog policy, under exceptional circumstances the instructor can grant an incomplete grade. The work will have to be completed within 90 days.

Instructor and Student Communication

Please use your Chaminade email or canvas to communicate with the instructor via email outside the class. Response time will be within four business days. In-person and Zoom conferences can be arranged.

Cell phones, tablets, and laptops

Out of consideration for your classmates, please set your cell phone to silent mode during class. Students are encouraged to bring laptops or tablets to class as the instructor will assign online activities and readings that will require the use of a laptop or tablet. Laptops and tablets should not be misused, such as checking distracting websites. Use your best judgment and respect your classmates and instructor.

Attendance Policy

Students are expected to attend regularly all courses for which they are registered. Student should notify their instructors when illness or other extenuating circumstances prevents them from attending class and make arrangements to complete missed assignments. Notification may be done by emailing the instructor's Chaminade email address, calling the instructor's campus extension, or by leaving a message with the instructor's division office. It is the instructor's prerogative to modify deadlines of course requirements accordingly. Any student who stops attending a course without officially withdrawing may receive a failing grade.

Unexcused absences equivalent to more than a week of classes may lead to a grade reduction for the course. **Any unexcused absence of two consecutive weeks or more may result in being withdrawn from the course by the instructor**, although the instructor is not required to withdraw students in that scenario. Repeated absences put students at risk of failing grades.

Students with disabilities who have obtained accommodations from the Chaminade University of Honolulu Tutor Coordinator may be considered for an exception when the accommodation does not materially alter the attainment of the learning outcomes.

Federal regulations require continued attendance for continuing payment of financial aid. When illness or personal reasons necessitate continued absence, the student should communicate first with the instructor to review the options. Anyone who stops attending a course without official withdrawal may receive a failing grade or be withdrawn by the instructor at the instructor's discretion.

Student Conduct Policy

Campus life is a unique situation requiring the full cooperation of each individual. For many, Chaminade is not only a school, but a home and a place of work as well. That makes it a community environment in which the actions of one students may directly affect other students. Therefore, each person must exercise a high degree of responsibility. Any community must have standards of conduct and rules by which it operates. At Chaminade, these standards are outlined so as to reflect both the Catholic, Marianist values of the institution and to honor and respect students as responsible adults. All alleged violations of the community standards are handled through an established student conduct process, outlined in the Student Handbook, and operated within the guidelines set to honor both students' rights and campus values.

Students should conduct themselves in a manner that reflects the ideals of the University. This includes knowing and respecting the intent of rules, regulations, and/or policies presented in the Student Handbook, and realizing that students are subject to the University's jurisdiction from the time of their admission until their enrollment has been formally terminated. Please refer to the Student Handbook for more details. A copy of the Student Handbook is available on the Chaminade website under Student Life.

Disability Access

If you need individual accommodations to meet course outcomes because of a documented disability, please speak with me to discuss your needs as soon as possible so that we can ensure your full participation in class and fair assessment of your work. Students with special needs who meet criteria for the Americans with Disabilities Act (ADA) provisions must provide written documentation of the need for accommodations from Kōkua 'Ike: Center for Student Learning by the end of week three of the class, in order for instructors to plan accordingly. If a student would like to determine if they meet the criteria for accommodations, they should contact the Kōkua 'Ike Coordinator at (808) 739-8305 for further information (ada@chaminade.edu).

Title IX and Nondiscrimination Statement

Chaminade University of Honolulu is committed to providing a learning, working and living environment that promotes the dignity of all people, inclusivity and mutual respect and is free of all forms of sex discrimination and gender-based violence, including sexual assault, sexual harassment, gender-based harassment, domestic violence, dating violence, and stalking. As a member of the University faculty, I am required to immediately report any incident of sex discrimination or gender-based violence to the campus Title IX Coordinator. For pregnant and parenting students, I am also obligated to provide you with similar resources for support and protections available to you. My goal is to make sure that you are aware of the range of options available to you and have access to the resources and support you need.

Nondiscrimination Policy & Notice of Nondiscrimination

The university is committed to comply with all State and Federal statutes, rules, and regulations which prohibit discrimination. The university is committed to a policy of nondiscrimination on the basis of race, sex, gender identity and expression, age, religion, color, national origin (including shared ancestry and ethnic characteristics), ancestry, citizenship, disability, genetic information, marital status, breastfeeding, arrest and court record (except as permissible under State law), sexual orientation, or status as a covered veteran. Inquiries about Title IX or general Civil Rights concerns may be referred to the University's Title IX Coordinator, the U.S. Department of Education's Office for Civil Rights, or both and contact information may be found [HERE](#). *On-campus Confidential Resources may also be found here at [CAMPUS CONFIDENTIAL RESOURCES](#).*

The University's Nondiscrimination Policy and Grievance Procedures can be located on the University webpage at: <https://chaminade.edu/compliance/title-ix-nondiscrimination-policies-procedures/>.

To report information about conduct that may constitute sex discrimination or make a complaint of sex discrimination under Title IX, please refer to the [Campus Incident Report form](#). Chaminade University of Honolulu prohibits sex discrimination in any education program or activity that it operates.

The NOTICE of NONDISCRIMINATION can be found here: [Notice of Nondiscrimination](#).

Hazing Prevention Resources and Athlete Helpline:

Assists athletes, parents, coaches, and any allies interested in ensuring physical and mental safety for sports communities by offering confidential emotional support, crisis intervention, informational athlete-focused resources, and guidance related to concerns about any type of abuse—including hazing.

Chaminade University's Hazing Policy:

<https://catalog.chaminade.edu/studenthandbook/codeofconduct>

<https://hazingpreventionnetwork.org/athlete-helpline/>

<https://hazingpreventionnetwork.org/how-to-report-hazing/>

Basic Needs Resources: <https://chaminade.edu/basic-needs/>

Campus Safety/ SafeSwords

A program for students, faculty and staff, who may feel uncomfortable or unsafe walking alone on campus, at any time of the day. Call security, and a security professional will meet you at your location on campus. The security professional will escort you to your residence hall, car, etc. Students may utilize this when walking to and from night classes around campus or after late night events. [SafeSwords Webpage](#)

CUH Alert Emergency Notification

To get the latest emergency communication from Chaminade University, students' cell numbers will be connected to Chaminade's emergency notification text system. When you log in to the Chaminade portal, you will be asked to provide some emergency contact information. If you provide a cellphone number, you will receive a text from our emergency notification system asking you to confirm your number. You must respond to that message to complete your registration and get emergency notifications on your phone.

Assessment for Student Work

With the goal of continuing to improve the quality of educational services offered to students, Chaminade University conducts assessments of student achievement of course, program, and institutional learning outcomes. Student work is used anonymously as the basis of these assessments, and the work you do in this course may be used in these assessment efforts.

Student with Disabilities Statement

Chaminade University of Honolulu offers accommodations for all actively enrolled students with disabilities in compliance with Section 504 of the Rehabilitation Act of 1973, the Americans with Disabilities Act (ADA) of 1990, and the ADA Amendments Act (2008).

Students are responsible for contacting Kokua Ike: Center for Student Learning to schedule an appointment. Verification of their disability will be requested through appropriate documentation and once received it will take up to approximately 2–3 weeks to review them. Appropriate paperwork will be completed by the student before notification will be sent out to their instructors. Accommodation paperwork will not be automatically sent out to instructors each semester, as the student is responsible to notify Kokua Ike via email at ada@chaminade.edu each semester if changes or notifications are needed.

Academic Honesty

Academic honesty is an essential aspect of all learning, scholarship, and research. It is one of the values regarded most highly by academic communities throughout the world. Violations of the principle of academic honesty are extremely serious and will not be tolerated.

Students are responsible for promoting academic honesty at Chaminade by not participating in any act of dishonesty and by reporting any incidence of academic dishonesty to an instructor or to a University official. Academic dishonesty may include theft of records or examinations, alteration of grades, and plagiarism, in addition to more obvious dishonesty.

Questions of academic dishonesty in a particular class are first reviewed by the instructor, who must make a report with recommendations to the Dean of the Academic Division. Punishment for academic dishonesty will be determined by the instructor and the Dean of Academic Division and may include an

“F” grade for the work in question, an “F” grade for the course, suspension, or dismissal from the University.

For the most up to date information, please refer to the [Academic Honesty Policy](#) on the Chaminade University Catalog website.

Credit Hour Policy

The unit of semester credit is defined as university-level credit that is awarded for the completion of coursework. One credit hour reflects the amount of work represented in the intended learning outcomes and verified by evidence of student achievement for those learning outcomes. Each credit hour earned at Chaminade University should result in a minimum of 45 hours of engagement, regardless of varying credits, duration, modality, or degree level. This equates to one hour of classroom or direct faculty instruction and a minimum of two hours of out-of-class student work each week for approximately fifteen weeks for one semester. Terms that have alternative lengths, such as 10 week terms, should have an equivalent amount of faculty instruction and out-of-class student work to meet each credit hour. Direct instructor engagement and out-of-class work result in total student engagement time of 45 hours for one credit. The number of engagement hours may be higher, as needed to meet specific learning outcomes.

Specific Credit Situations

The minimum 45 hours of engagement per credit hour can be satisfied in fully online, internship, or other specialized courses through several means, including (a) regular online instruction or interaction with the faculty member and fellow students and (b) academic engagement through extensive reading, research, online discussion, online quizzes or exams; instruction, collaborative group work, internships, laboratory work, practica, studio work, and preparation of papers, presentations, or other forms of assessment. This policy is in accordance with federal regulations and regional accrediting agencies.

This is a one-credit hour course requiring 45 clock hours of student engagement, per the official CUH Credit Hour Policy. Students enrolled in this course are expected to spend:

- 30 hours in laboratory,
- 10+ hours of laboratory preparation, study and lab summary writing plus homework including laboratory simulations.
- 2.5+ hours reviewing for exam 1 (You will need more than 2.5 hours if you did not keep up with the material, so please review your data/note after each lab).
- 2.5+ hours reviewing for the final exam.

Tentative schedule.

1/13/2026	Week 1	Introduction/lab safety
1/20/2026	Week 2	Basic microscopy-Intro to lab simulations
1/27/2026	Week 3	Simple stains+
2/3/2026	Week 4	Gram stain+ selective and differential agar setup
2/10/2026	Week 5	Endospore staining + Selective and differential agar results
2/17/2026	Week 6	Biochemical testing and Bacteria identification+Virus worksheet
2/24/2026	Week 7	Eukaryotes part 1 Fungi- and Review
3/3/2026	Week 8	MIDTERM
3/10/2026	Week 9	Eukaryotes part 2 Protists
3/17/2026	Week 10	Spring Break
3/24/2026	Week 11	Kirby-Bauer setup-COVID-19 tests: how do they work?
3/31/2026	Week 12	No lab this week.
4/7/2026	Week 13	Kirby Bauer results + Bacterial enumeration setup
4/14/2026	Week 14	Bacterial enumeration results+Eukaryote part 3-helminths
4/21/2026	Week 15	REVIEW
4/28/2026	Week 16	FINAL EXAM

While the provisions of this syllabus are as accurate and complete as possible, your instructor reserves the right to change any provision herein at any time. Every effort will be made to keep you advised of such changes, and information about such changes will be available from your instructor.