

---

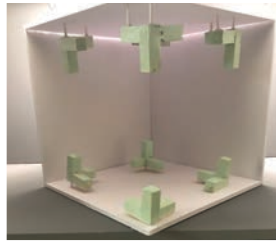
CHAMINADE UNIVERSITY of HONOLULU  
ENVIRONMENTAL + INTERIOR DESIGN  
SPRING 2021  
EID 271 Materiality in Interior Design (4 cr)  
Class hours: M, W 1:00 pm – 4:00 pm  
Class location: Eiben 108

SYLLABUS

# EID 271 MATERIALITY in INTERIOR DESIGN



Instructor:  
Junghwa K. Suh , D.Arch  
Office hours: by appointment  
Office: Eiben 208  
Office phone: 739-8590  
Email: Junghwa.suh@chaminade.edu



---

## COURSE DESCRIPTION

EID 271 Materiality in Interior Design (4cr) is studio course examines how design concept is translated through materiality, focusing on the integration of appropriate materials, finishes, and products in the design of interior environments—both commercial and residential. The studio investigate 'materiality' as means to develop interior space. Material characteristics, specifications, installation methods, maintenance requirements, and sustainability features will be explored within the context of a comprehensive design project. Prerequisites: EID 201, EID 202, and EID 217 (which may be taken concurrently).

Offered each semester.

Prerequisite: passing the E+ID comprehensive exam or consent of instructor.

---

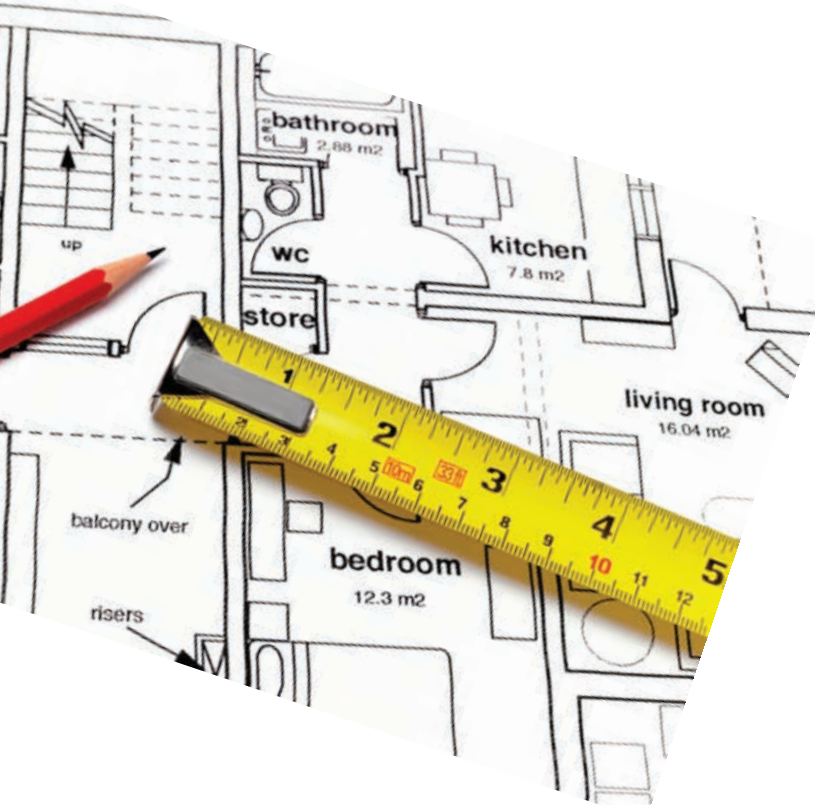
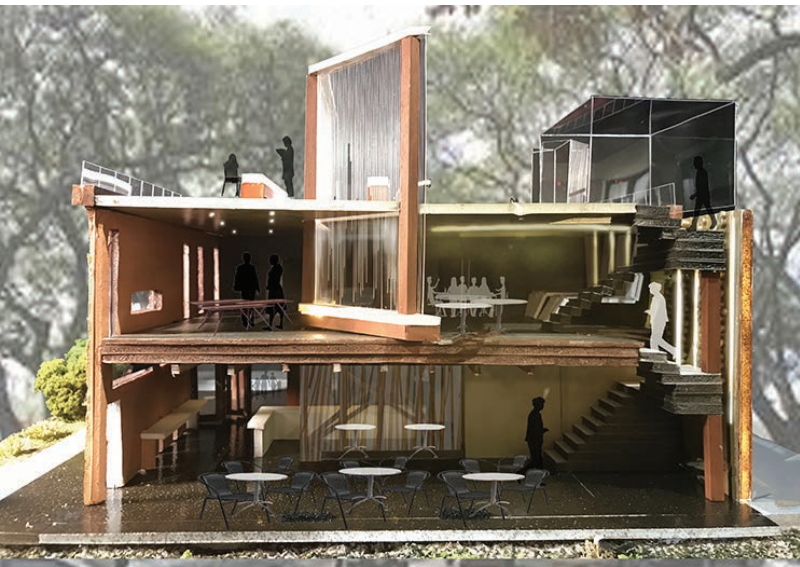
## CLASS FORMAT

### Materiality:

Over the duration of the semester, we will examine various aspects of materiality, applying the principles presented in class to a comprehensive, semester-long design project. To encourage creative thinking and design innovation, there will be a special emphasis on how the building typology will evolve in the future. As this is primarily a studio-format course, students are expected to work intensively on their projects during the entire class period, whether they are scheduled for desk critiques or not.

In addition to studio work, various materials will be discussed and researched, learning how they are integrated into a design project. Students will be given questions to learn about various interior material characteristics and their appropriate use. It is encouraged for students to use various literature, web and professional resources, so they develop clear understanding of various interior materials' appropriate and effective use.

Students should become familiar with the range and availability of products on the island and demonstrate understanding of appropriate material use in their projects. Project specifications should include as many locally-sourced and sustainable items as possible. You are also required to specify particular materials that work with your concept and goals to drive your design. This will come from your research of the project context in the beginning of the semester, then you will explore characteristics, specifications, installation methods, maintenance requirements, and sustainability features of your selected material throughout the semester.



---

## CLASS FORMAT (CONT.)

### Design Studio Project:

The comprehensive design project will explore and develop the following aspects: pre-design research (precedent studies, client profile, field documentation, site analysis); design conceptualization (ideation); design strategy (translation); programming; space planning and specifications (synthesis). Particular emphasis will be placed on design development with respect to materiality, as well as the selection of components, such as cabinetry, doors, windows, hardware, fixtures and equipment.

In preparation for this course, students must possess basic skills in technical drawing and model-building which have been developed from your previous design classes. For the first half of the semester students are expected to explore ideas and concepts through hand drawing and sketching, as well as build study models as part of your process work. At mid-semester, your schematic design drawings will be translated and further developed in AutoCAD, using a digital template that will be provided for you.

At the end of the semester, there will be a final review of your completed design project in class. In addition to this presentation, students are required to present their project from this course for the 200-level practicum review. The purpose of the practicum is to assess both your ability to synthesize what you have learned thus far in the program and actively apply that knowledge in a design capacity, as well as your readiness for the upper division E+ID courses. The review is scheduled for the week after finals, so please prepare to remain on-island after the semester is over.

---

## DESIGN METHODOLOGY

Remember: design is neither a linear nor sequential process, but an iterative one. For each project assignment, you should get in the habit of investigating and revising numerous options. Not all of them have to be viable, but should show evidence of exploration or refinement of ideas ("process"); design is not about making something that looks good. This takes a lot more time than we usually anticipate, so manage your time accordingly. You are also encouraged to work with others and exchange constructive feedback to each other. Evaluation criteria for both design project and materiality research will be given. The criteria and feedback will help you to understand the expectations of each design phase and research and improve your project. Getting feedback from multiple perspectives will help you to see your project in unexpected ways, which in turn will strengthen your work. You should always challenge yourself to explore various design ideas and ways to resolve design issues/ achieve design goals.



School House by SOM



UK Lampshade Distancing Shade

## REQUIRED MATERIALS

- all materials from EID 200 and 202 courses
- personal design book
- project binder
- instructor will ask you to bring certain materials based on specific learning content each week.

## CLASS TEXTS:

M. McGowan & K. Kruse, Interior Graphic Standards (Student Edition)  
 Knowles & Boehr (2014). A Comprehensive Guide for Selecting Interior Finishes  
 Corky Binggeli, Materials for Interior Environments  
 Maryrose McGowan, Specifying Interiors  
 Environmental Product Guide for Hawai'i 2011  
 ([http://energy.hawaii.gov/wp-content/uploads/2011/10/EPG-FINAL\\_Fall-2011.pdf](http://energy.hawaii.gov/wp-content/uploads/2011/10/EPG-FINAL_Fall-2011.pdf))

## GRADING

Evaluation criteria are based on the following:

- Quality and creativity of design work
- Thoroughness and craft in presentation
- Technical skill & proficiency
- Contribution of ideas and engagement in class
- Willingness to experiment and to challenge yourself
- Rigor
- Professional demeanor

Design Project:

1. Design Concept (creativity, relevance, depth) - 20%
2. Design Strategy (human environmental effect, functionality, space planning) - 30%
3. Design Execution (technical skills, aesthetic quality, completeness) - 30%
4. Presentation (narrative, display, ppt) - 20%

Your final grade will be weighted as follows:

Design project	45%	} = 100%
Materiality Research Exercises	40%	
Attendance & Participation	15%	

Participation is crucial. Should you have to miss or arrive late for a class when we are scheduled to meet, inform me in advance when possible and make arrangements to make up any missed work, and obtain materials and information from one of your classmates. Do not expect your instructors to make special concessions or accommodations for your absence. All projects must be complete and submitted on time, unless otherwise arranged. Any work not submitted on time or that is incomplete will result in 0.1 point subtracted from your overall project grade GPA (e.g., a 3.0 overall GPA will be lowered to 2.9).

Additional Attachments:  
 Expected Outcomes: Course Learning & EID Program  
 Academic Honesty  
 ADA Accommodation  
 Title IX Compliance  
 CUH EID Professional Code of Conduct

## Connection to the Characteristics of a Marianist Education

The following are characteristics of the approach to education engaged at Marianist schools, including Chaminade University:

- Educate for formation in faith:
  - Trust in yourself and your instructor to do a good job in your best ability.
- Provide an integral quality education
  - Interactive learning between students and an instructor and students and students is a key for the success of digesting the information.
  - Proactive attitude towards learning is important.
- Educate in family spirit
  - Success can be achieved by harnessing everyone's growth together
- Educate for service, justice and peace
  - Be mindful of how your design may impact users, occupants and the environment
- Educate for adaptation and change
  - As people grow and change, the space needs to respond to the changes of people, environment and the society.

## Academic Conduct Policy

*From the 2019-2020 Undergraduate Academic Catalog (p. 39):*

Any community must have a set of rules and standards of conduct by which it operates. At Chaminade, these standards are outlined so as to reflect both the Catholic, Marianist values of the institution and to honor and respect students as responsible adults. All alleged violations of the community standards are handled through an established student conduct process, outlined in the Student Handbook, and operated within the guidelines set to honor both students' rights and campus values.

Students should conduct themselves in a manner that reflects the ideals of the University. This includes knowing and respecting the intent of rules, regulations, and/or policies presented in the Student Handbook, and realizing that students are subject to the University's jurisdiction from the time of their admission until their enrollment has been formally terminated. Please refer to the Student Handbook for more details. A copy of the Student Handbook is available on the Chaminade website.

For further information, please refer to the [Student Handbook](#).

## Disability Access

If you need individual accommodations to meet course outcomes because of a documented disability, please speak with me to discuss your needs as soon as possible so that we can ensure your full participation in class and fair assessment of your work. Students with special needs who meet criteria for the Americans with Disabilities Act (ADA) provisions must provide written documentation of the need for accommodations from Kōkua 'Ike: Center for Student Learning by the end of week three of the class, in order for instructors to plan accordingly. If a student would like to determine if they meet the criteria for accommodations, they should contact the Kōkua 'Ike Coordinator at (808) 739-8305 for further information ([ada@chaminade.edu](mailto:ada@chaminade.edu)).

<https://chaminade.edu/student-life/ada-accommodations/>

## Title IX Compliance

Chaminade University of Honolulu recognizes the inherent dignity of all individuals and promotes respect for all people. Sexual misconduct, physical and/or psychological abuse will NOT be tolerated at CUH. If you have been the victim of sexual misconduct, physical and/or psychological abuse, we encourage you to report this matter promptly. As a faculty member, I am interested in promoting a safe and healthy environment, and should I learn of any sexual misconduct, physical and/or psychological abuse, I must report the matter to the Title IX Coordinator. If you or someone you know has been harassed or assaulted, you can find the appropriate resources by visiting Campus Ministry, the Dean of Students Office, the Counseling Center, or the Office for Compliance and Personnel Services.

## Counseling Center

Chaminade University of Honolulu recognizes that students are facing many more challenges with daily stresses related and unrelated to the impact of COVID-19. The Counseling Center is happy to assist with any counseling-related consultations. Contact info: [counselingcenter@chaminade.edu](mailto:counselingcenter@chaminade.edu) or call us directly at (808) 735-4845.

## Attendance Policy

The following attendance policy is from the 2019-2020 Academic Catalog (p. 57-58). Faculty members should also check with their divisions for division-specific guidelines.

Students are expected to attend regularly all courses for which they are registered. Students should notify their instructors when illness or other extenuating circumstances prevent them from attending class and make arrangements to complete missed assignments. Notification may be done by emailing the instructor's Chaminade email address or calling the instructor's campus extension. It is the instructor's prerogative to modify deadlines of course requirements accordingly. Any student who stops attending a course without officially withdrawing may receive a failing grade.

- Unexcused absences equivalent to more than a week of classes may lead to a grade reduction for the course.
- Any unexcused absence of two consecutive weeks or more may result in being withdrawn from the course by the instructor, although the instructor is not required to withdraw students in that scenario. Repeated absences put students at risk of failing grades.

## PROFESSIONAL CODE OF CONDUCT

Students of Chaminade University's Environmental + Interior Design Program (CUH-EID) are expected to maintain professional standards of behavior during their tenure here. As guidelines, CUH-EID has adopted the following protocols: (some terms are particular to current situations for health and safety.)

### CLASSROOM BEHAVIOR

- For the safety and health of everyone in the class, you MUST wear a facemask/covering at all times during the class session (no pulling up your shirt or covering your face with a scarf as an immediate cover-up). You may NOT enter the classroom without a facemask/covering.
- Maintain 6 feet physical distance from one another at all times during the class session.
- Cell phone use in class (calls, texting, emailing) is prohibited; cell phone ringers must be turned off at all times except in case of emergency. If making a call is absolutely necessary, then please step outside the classroom to do so.
- When class is in session, you are expected to show courtesy to your instructor as well as to other students. If your behavior is deemed disruptive, you will be asked to leave the class and consequently receive an unexcused absence for that day.
- All assigned work should be completed by the beginning of the class period for which it is to be presented or submitted. Working on homework, presentations, etc. while an instructor or guest speaker is lecturing, or while students are presenting in class, is disrespectful and will NOT be tolerated.

### NETIQUETTE

When we are in online session:

- Choose a quiet workspace that is suitable for the online classroom.
- Mute your audio when you are not talking or typing. Only turn it on if you are asked to speak.
- Be on time! for your online class times. Make sure to be in a waiting room 5 minutes prior to the class starting time.



- Participation in online discussion is a major component of the course. The purpose of these discussions is not simple checking-ins or liking/disliking what your fellow classmates are doing. The discussion boards are the spaces where you can help each other to improve the understanding of learning content and information. Be constructive and respectful of the feedback you provide for your fellow classmates.
- Response due dates will be indicated in each discussion board. A rubric will be provided for you to check if essential information is addressed in each discussion assignment.

### CLASS ATTENDANCE & ASSIGNMENTS

- Three unexcused absences during the course of the semester will result in one letter grade demotion for the course (i.e. if your grade is "B," it can be demoted to "C"). Similarly, six unexcused tardiness will result in one letter grade demotion for the course.
- Failure to attend presentations or exams, without informing the instructor in advance, will result in an F for the exam/project; failure to attend a final presentation, final exam or final project submission without informing the instructor in advance will result in an F for the course.
- Students should always inform the instructor in 2 days advance (in writing or by email) of any anticipated absences, tardiness, or irregular/unanticipated scheduling conflicts (e.g., jury duty, team sport commitment, etc.) Do not schedule medical or personal appointments during scheduled class time.
- Assignments from a missed class must be made up by the next class meeting unless an extension has been arranged with the instructor. Do not expect an instructor to repeat a lecture for you; students must arrange with a fellow student to pick up class materials, lecture notes, homework assignments, exercises, etc.
- Assignments handed in late will not be accepted unless arranged in advance with the instructor; 5 points will be deducted from the total number of points for each day the assignment is late beyond the prescribed due date.
- If you have any questions or concerns, please contact me via email. I will respond to your email within a day or two. You will receive feedback on your assignments, projects, and exams within one week of submission. I will not be checking the work emails during the weekends starting from 5 pm on Fridays, so please do not expect

any email responses during the weekends.

### USE OF FACILITIES

- Only beverages in sealed containers are allowed in the EID assigned studios/classrooms; in rooms with computers, beverages must be kept on the floor, away from the computer equipment and outlets. Hydration is very important during class. You may step out of the classroom if you need to drink water from your container.
- NO Meals (snacks, fruits, any food) allowed in the studio/classroom. Meals should be taken in the EID Student Resource Center.
- Wipe your work area before & after yourselves in CAD studios, classrooms, the materials library, the kitchen area, the resource center, and the print room.
- Any damage to workstations or equipment will be charged to the student; if the person cannot be readily determined, the class(es) using the studio/classroom will bear the expense of the repairs collectively.

### PERSONAL STANDARDS

- Students should dress in a professional manner when attending any public functions on behalf of the school, on field trips/site visits, or when guests visit the class. You are representing the EID Program, Chaminade University, and most importantly, yourself to your future constituents: employers, colleagues, contractors, clients, etc.
- Students must be prepared with all materials required for the class; the inability to work during the class will result in an unexcused absence for the day.
- Cheating on any exam, exercises, or assignments will result in automatic failure of the course.

I have read, understand, and agree to the terms of CUH- EID Professional Code of Conduct.

Student Signature: \_\_\_\_\_

---

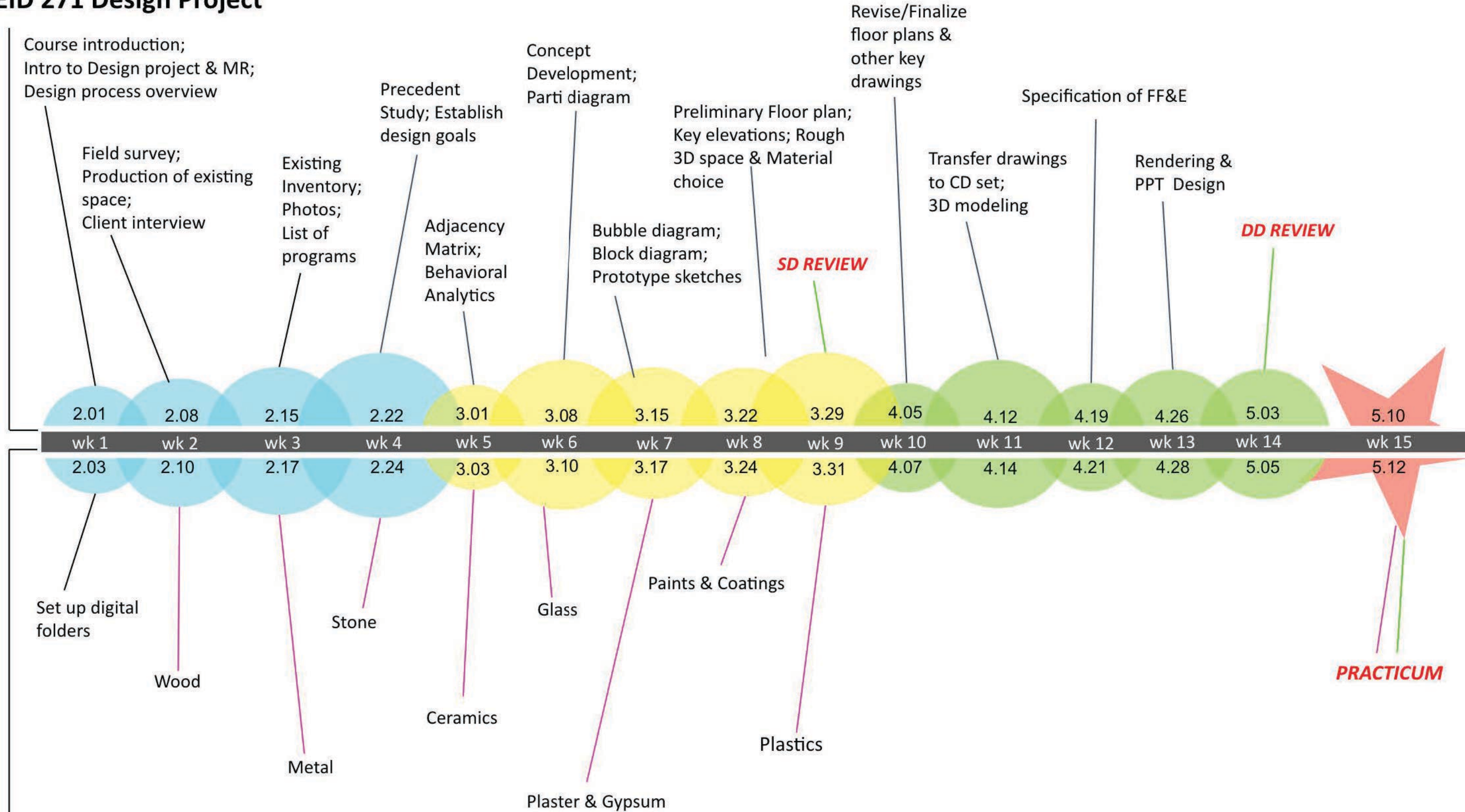
CHAMINADE UNIVERSITY of HONOLULU  
ENVIRONMENTAL + INTERIOR DESIGN  
Instructor: Junghwa K. Suh, D.Arch



Date: \_\_\_\_\_

- PROGRAMMING
- SD PHASE
- DD PHASE

## EID 271 Design Project



## EID 271 Materiality Research (MR)

Legend: — Mon. — Wed.

*n.b. Course content and scheduling are subject to change at the instructor's discretion in the interest of sound pedagogy.*