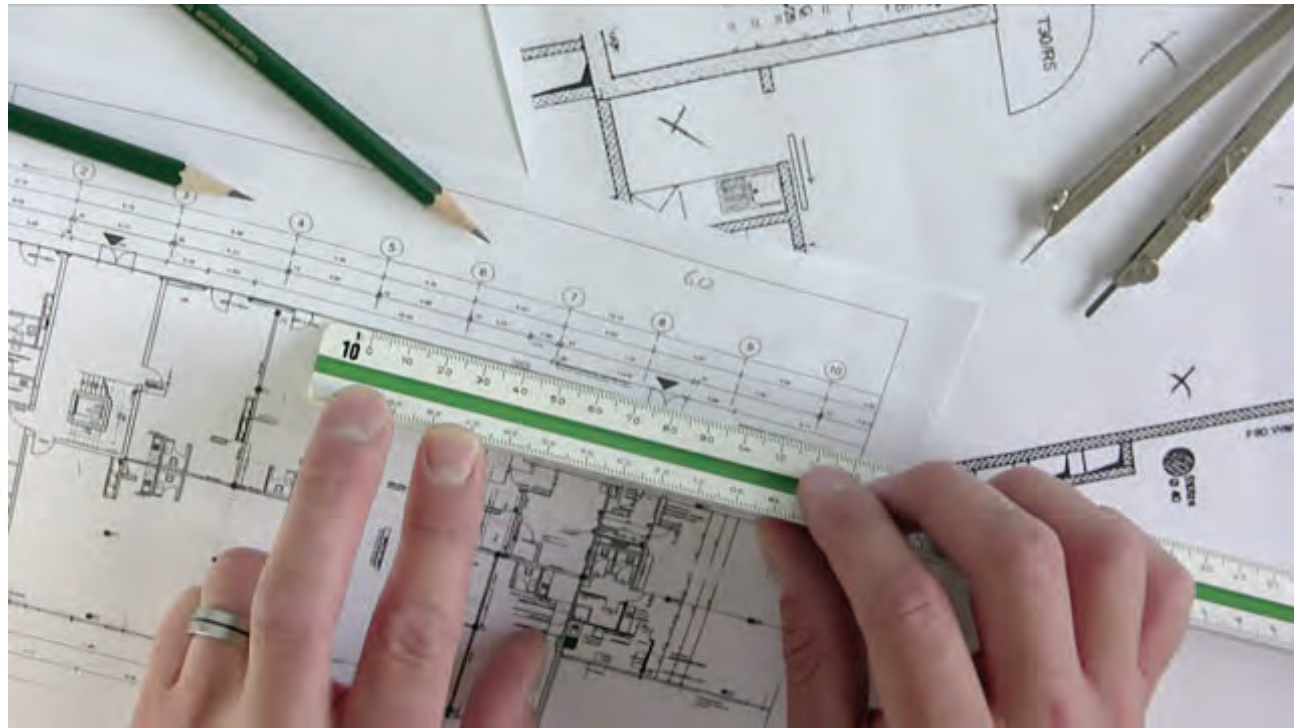
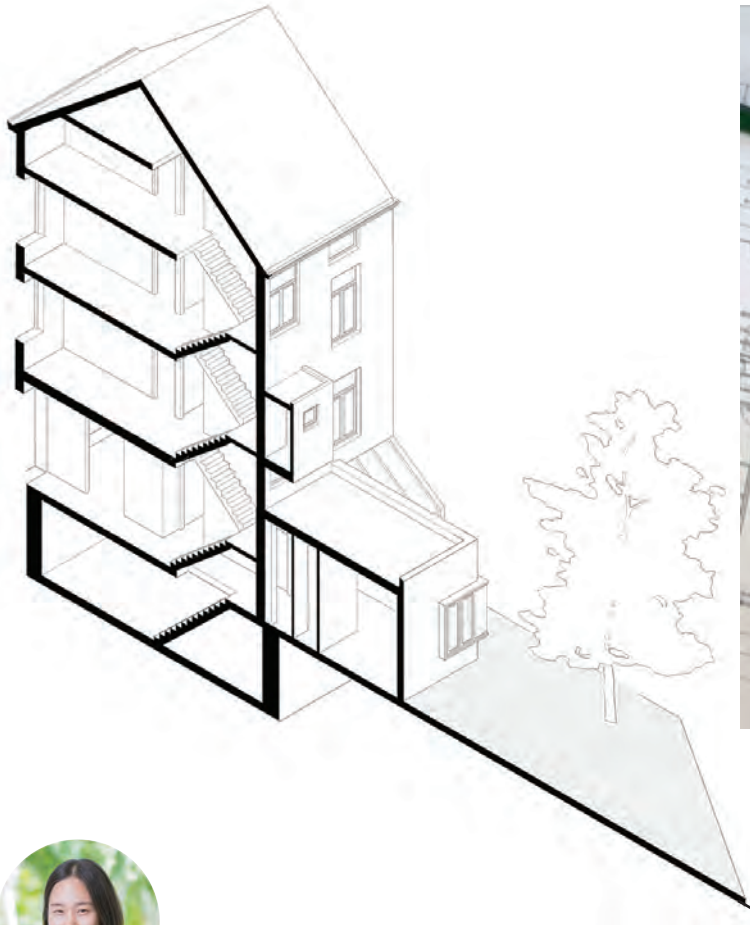


CHAMINADE UNIVERSITY of HONOLULU
ENVIRONMENTAL + INTERIOR DESIGN
Fall 2020
EID 202: Intro to Technical Drawing
hours: Tues & Thur 9:40 am - 12:50 pm
location: Eiben 108

SYLLABUS

EID 202 INTRODUCTION TO TECHNICAL DRAWING



Instructor: Junghwa K. Suh, D.Arch
Office hours: By appointment
Office: Eiben 208
Office phone: 808.739.8590
Email: Junghwa.suh@chaminade.edu



COURSE DESCRIPTION

Introduction to various types of technical drawing, including orthographic, perspective, axonometric, and field sketching. Emphasis on hand drafting and the knowledge of mechanical drawing tools and techniques used in the field of architecture and interior design. Students will learn to both read and execute construction drawings such as floor plans, elevations, and sections, in order to later apply these skills to translate their own design work. (Offered annually)

COURSE CONTENT

Lectures and demonstration
In-class exercises
Assignments
Construction drawing document

CLASS FORMAT

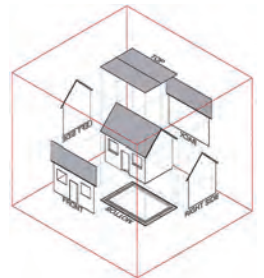
At the beginning of each week, the class will begin with a lecture introducing a new drawing type and explanation of techniques, followed by in-class exercises and assignments. All drawings will be done in class but can be completed at home if needed. Each completed drawing must be submitted by the assigned day in the following week, before the beginning of the class; however, students should keep their trace underlays as these will be necessary for the construction of subsequent drawings. By the end of the semester, each student will have produced a construction drawing package by hand that reflects the body of knowledge and skills they have acquired throughout the course.

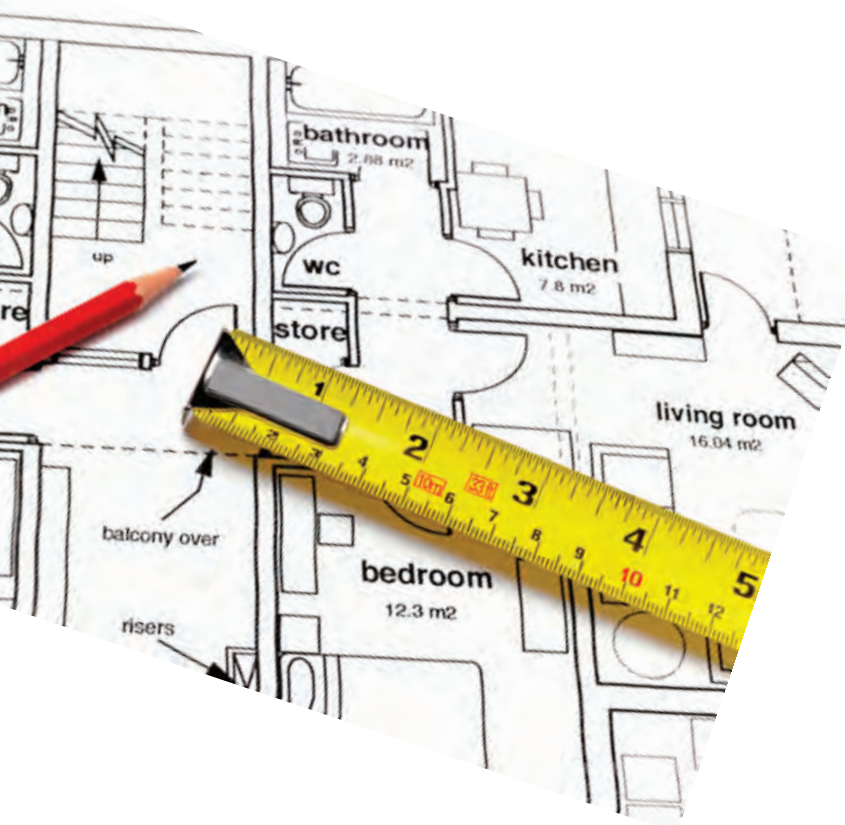
You can access all the lectures and videos from Canvas. We will always start our class by checking the course map to understand where we are in the journey of this course. The drafting table in the classroom will be your main work area for the semester. If you would like to have a portable drafting table for the flexibility of working at home or your dorm room outside of class time, you may purchase the table on your own.

LEARNING OBJECTIVES

The purpose of this course is to prepare you to communicate design ideas through the technical language of the architect/interior designer/builder, including how to read and understand construction documents. There are 3 types of technical drawings that will be covered: orthographic, axonometric, and perspectival; skills that will be covered include:

- architectural drawing conventions and symbols
- electrical and lighting plan
- field sketching and documentation
- furniture and fixture layouts
- dimensioning and noting





LEARNING OUTCOMES

Technical Drawing Comprehension

Students will be able to read and comprehend a set of basic construction documents.
PO [2][3][5] / CIDA [9] - EMERGING

Technical Drawing Execution

Students will be able to execute a basic set of construction documents.
PO [2][4] / CIDA [15] - EMERGING

Design & Construction Methods

Students will be able to correlate principles of technical drawing to both the process of design and the methods of construction.
PO [2][4] / CIDA [16] - EMERGING

EVALUATION CRITERIA

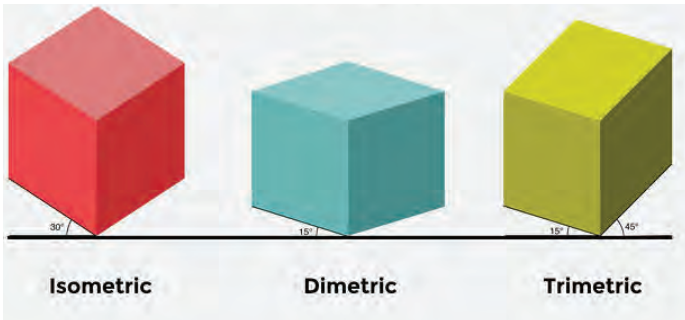
Students will be evaluated primarily by the drawings they produce—based on **Accuracy, Technical skill, and Completeness of drawings**—but also on **Attendance and Participation**.

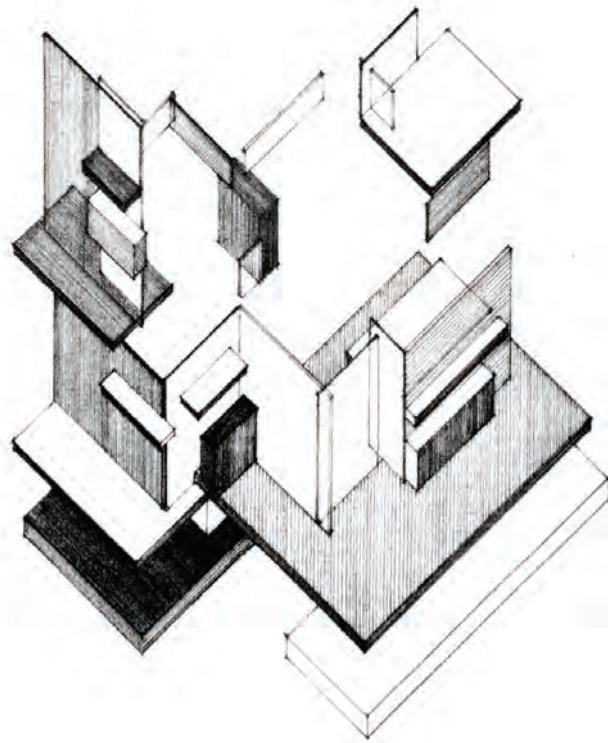
GRADING

Your final grade will be weighted as follows:

- Construction drawing package	70%	} = 100%
- Drafting exercises	10%	
- Quiz (2)	15%	
- Attendance/In-class participation	5%	

Should you have to miss a class, please inform me in advance when possible; in any case you will be responsible to make up any missed work on your own. It is highly recommended that you make arrangements with one of your classmates to review what was missed in class; do not expect the instructor to repeat the lecture or make special accommodations due to absence. Please come prepared and do not be late, as tardiness disrupts the class. All projects must be complete and submitted on time, unless otherwise arranged in advance. Any unexcused late submissions will be dropped by one letter grade. Any assignments submitted over one week late will not be accepted. In the event of three unexcused absences or three unexcused tardies your course grade will be lowered by one letter grade.





REQUIRED TOOLS & MATERIALS

- 18" roll of sketching trace paper
- architectural scale (engraved plastic with colored stripes)
- 3 mechanical pencils (0.3mm, 0.5mm, 0.7mm)
- lead (2H/0.3mm, HB/0.5mm, 3B/0.7mm)
- 18"x 24" pad of unlined vellum paper
- erasing stick
- erasing shield & circle template
- adjustable triangle
- drafting tapes
- drafting brush

It is imperative to purchase ALL the prescribed materials and tools during the first week of the course, and bring them to EACH class; without these items, you will not be able to participate in the classwork.

REFERENCES

Architectural Drafting for Interior Designers, Lydia Sloan Cline (any edition)

EID PROGRAM OUTCOMES

1) **Professionalism** – understand, apply and participate in ethical design practices on a personal, project, peer and industry-wide level. (CIDA 5,6,9)

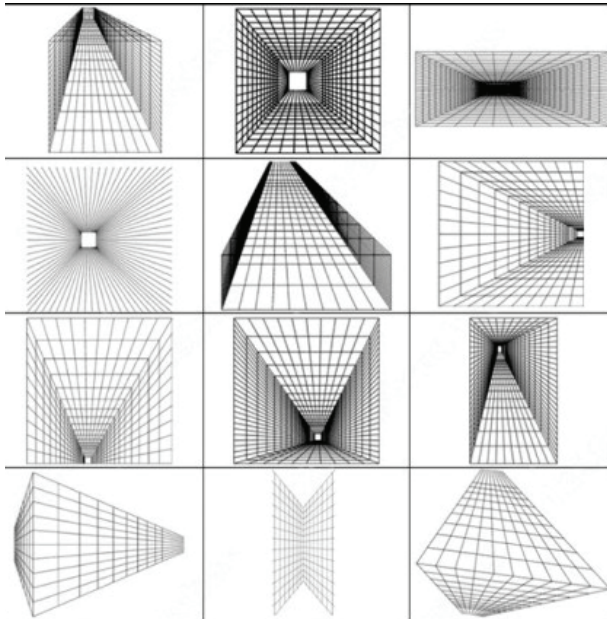
2) **Process** – ability to identify problems/challenges and demonstrate an understanding of the complete design process from inception to installation, execute documentation supporting design decisions and effect comprehensive, creative, focused and functional design solutions. (CIDA 4,5,7,8,9,11,13,14,15,16)

3) **Principles & Priorities** – integration of pedagogy, research, historic contexts, theory, and interdisciplinary collaboration to effectively and creatively analyze, evaluate and execute best design practices resulting in functional and aesthetically inspiring design. (CIDA 8,9,10,11,12,13)

4) **Public & Environmental Protection** – demonstrate an understanding of the concepts, resources and implications of design decisions relative to the human interaction, technological impact and ecological balance of the built environment. (CIDA 4,7,12,13,14,15,16)

5) **Presentation** – demonstrate ability to communicate design concepts and problem solving justifications through written, oral and a variety of visual media. (CIDA 6,9)

See Attachments: **Academic Honesty; ADA Accommodation; Title IX Compliance; CUH EID Professional Code of Conduct**



Connection to the Characteristics of a Marianist Education

The following are characteristics of the approach to education engaged at Marianist schools, including Chaminade University:

- Educate for formation in faith:
 - Trust in yourself and your instructor to do a good job in your best ability.
- Provide an integral quality education
 - Interactive learning between students and an instructor and students and students is a key for the success of digesting the information.
 - Proactive attitude towards learning is important.
- Educate in family spirit
 - Success can be achieved by harnessing everyone's growth together
- Educate for service, justice and peace
 - Be mindful of how your design may impact users, occupants and the environment
- Educate for adaptation and change
 - As people grow and change, the space needs to respond to the changes of people, environment and the society.

Academic Conduct Policy

From the 2019-2020 Undergraduate Academic Catalog (p. 39):

Any community must have a set of rules and standards of conduct by which it operates. At Chaminade, these standards are outlined so as to reflect both the Catholic, Marianist values of the institution and to honor and respect students as responsible adults. All alleged violations of the community standards are handled through an established student conduct process, outlined in the Student Handbook, and operated within the guidelines set to honor both students' rights and campus values.

Students should conduct themselves in a manner that reflects the ideals of the University. This includes knowing and respecting the intent of rules, regulations, and/or policies presented in the Student Handbook, and realizing that students are subject to the University's jurisdiction from the time of their admission until their enrollment has been formally terminated. Please refer to the Student Handbook for more details. A copy of the Student Handbook is available on the Chaminade website.

For further information, please refer to the [Student Handbook](#).

Disability Access

If you need individual accommodations to meet course outcomes because of a documented disability, please speak with me to discuss your needs as soon as possible so that we can ensure your full participation in class and fair assessment of your work. Students with special needs who meet criteria for the Americans with Disabilities Act (ADA) provisions must provide written documentation of the need for accommodations from Kōkua 'Ike: Center for Student Learning by the end of week three of the class, in order for instructors to plan accordingly. If a student would like to determine if they meet the criteria for accommodations, they should contact the Kōkua 'Ike Coordinator at (808) 739-8305 for further information (ada@chaminade.edu).

Title IX Compliance

Chaminade University of Honolulu recognizes the inherent dignity of all individuals and promotes respect for all people. Sexual misconduct, physical and/or psychological abuse will NOT be tolerated at CUH. If you have been the victim of sexual misconduct, physical and/or psychological abuse, we encourage you to report this matter promptly. As a faculty member, I am interested in promoting a safe and healthy environment, and should I learn of any sexual misconduct, physical and/or psychological abuse, I must report the matter to the Title IX Coordinator. If you or someone you know has been harassed or assaulted, you can find the appropriate resources by visiting Campus Ministry, the Dean of Students Office, the Counseling Center, or the Office for Compliance and Personnel Services.

Attendance Policy

The following attendance policy is from the 2019-2020 Academic Catalog (p. 57-58). Faculty members should also check with their divisions for division-specific guidelines.

Students are expected to attend regularly all courses for which they are registered. Students should notify their instructors when illness or other extenuating circumstances prevent them from attending class and make arrangements to complete missed assignments. Notification may be done by emailing the instructor's Chaminade email address or calling the instructor's campus extension. It is the instructor's prerogative to modify deadlines of course requirements accordingly. Any student who stops attending

a course without officially withdrawing may receive a failing grade.

- Unexcused absences equivalent to more than a week of classes may lead to a grade reduction for the course.
- Any unexcused absence of two consecutive weeks or more may result in being withdrawn from the course by the instructor, although the instructor is not required to withdraw students in that scenario. Repeated absences put students at risk of failing grades.

PROFESSIONAL CODE OF CONDUCT

Students of Chaminade University's Environmental + Interior Design Program (CUH-EID) are expected to maintain professional standards of behavior during their tenure here. As guidelines, CUH-EID has adopted the following protocols: (some terms are particular to current situations for health and safety.)

CLASSROOM BEHAVIOR

- For the safety and health of everyone in the class, you **MUST** wear a facemask/covering at all times during the class session (no pulling up your shirt or covering your face with a scarf as an immediate cover-up). You may **NOT** enter the classroom without a facemask/covering.
- Maintain 6 feet physical distance from one another at all times during the class session.
- Cell phone use in class (calls, texting, emailing) is prohibited; cell phone ringers must be turned off at all times except in case of emergency. If making a call is absolutely necessary, then please step outside the classroom to do so.
- When class is in session, you are expected to show courtesy to your instructor as well as to other students. If your behavior is deemed disruptive, you will be asked to leave the class and consequently receive an unexcused absence for that day.
- All assigned work should be completed by the beginning of the class period for which it is to be presented or submitted. Working on homework, presentations, etc. while an instructor or guest speaker is lecturing, or while students are presenting in class, is disrespectful and will **NOT** be tolerated.

NETIQUETTE

When we are in online session:

- Choose a quiet workspace that is suitable for the online classroom.
- Mute your audio when you are not talking or typing. Only turn it on if you are asked to speak.
- Be on time! for your online class times. Make sure to be in a waiting room 5 minutes prior to the class starting time.
- Participation in online discussion is a major component of the course. The purpose of these discussions is not simple checking-ins or liking/disliking what your fellow

classmates are doing. The discussion boards are the spaces where you can help each other to improve the understanding of learning content and information. Be constructive and respectful of the feedback you provide for your fellow classmates.

- Response due dates will be indicated in each discussion board. A rubric will be provided for you to check if essential information is addressed in each discussion assignment.

CLASS ATTENDANCE & ASSIGNMENTS

- Three unexcused absences during the course of the semester will result in one letter grade demotion for the course (i.e. if your grade is "B," it can be demoted to "C"). Similarly, six unexcused tardiness will result in one letter grade demotion for the course.
- Failure to attend presentations or exams, without informing the instructor in advance, will result in an F for the exam/project; failure to attend a final presentation, final exam or final project submission without informing the instructor in advance will result in an F for the course.
- Students should always inform the instructor in 2 days advance (in writing or by email) of any anticipated absences, tardiness, or irregular/unanticipated scheduling conflicts (e.g., jury duty, team sport commitment, etc.) Do not schedule medical or personal appointments during scheduled class time.
- Assignments from a missed class must be made up by the next class meeting unless an extension has been arranged with the instructor. Do not expect an instructor to repeat a lecture for you; students must arrange with a fellow student to pick up class materials, lecture notes, homework assignments, exercises, etc.
- Assignments handed in late will not be accepted unless arranged in advance with the instructor; 5 points will be deducted from the total number of points for each day the assignment is late beyond the prescribed due date.
- If you have any questions or concerns, please contact me via email. I will respond to your email within a day or two. You will receive feedback on your assignments, projects, and exams within one week of submission. I will not be checking the work emails during the weekends starting from 5 pm on Fridays, so please do not expect any email responses during the weekends.

USE OF FACILITIES

- Only beverages in sealed containers are allowed in the EID assigned studios/classrooms; in rooms with computers, beverages must be kept on the floor, away from the computer equipment and outlets. Hydration is very important during class. You may step out of the classroom if you need to drink water from your container.
- NO Meals (snacks, fruits, any food) allowed in the studio/classroom. Meals should be taken in the EID Student Resource Center.
- Wipe your work area before & after yourselves in CAD studios, classrooms, the materials library, the kitchen area, the resource center, and the print room.
- Any damage to workstations or equipment will be charged to the student; if the person cannot be readily determined, the class(es) using the studio/classroom will bear the expense of the repairs collectively.

PERSONAL STANDARDS

- Students should dress in a professional manner when attending any public functions on behalf of the school, on field trips/site visits, or when guests visit the class. You are representing the EID Program, Chaminade University, and most importantly, yourself to your future constituents: employers, colleagues, contractors, clients, etc.
- Students must be prepared with all materials required for the class; the inability to work during the class will result in an unexcused absence for the day.
- Cheating on any exam, exercises, or assignments will result in automatic failure of the course.

I have read, understand, and agree to the terms of CUH- EID Professional Code of Conduct.

Student Signature: _____

Date: _____