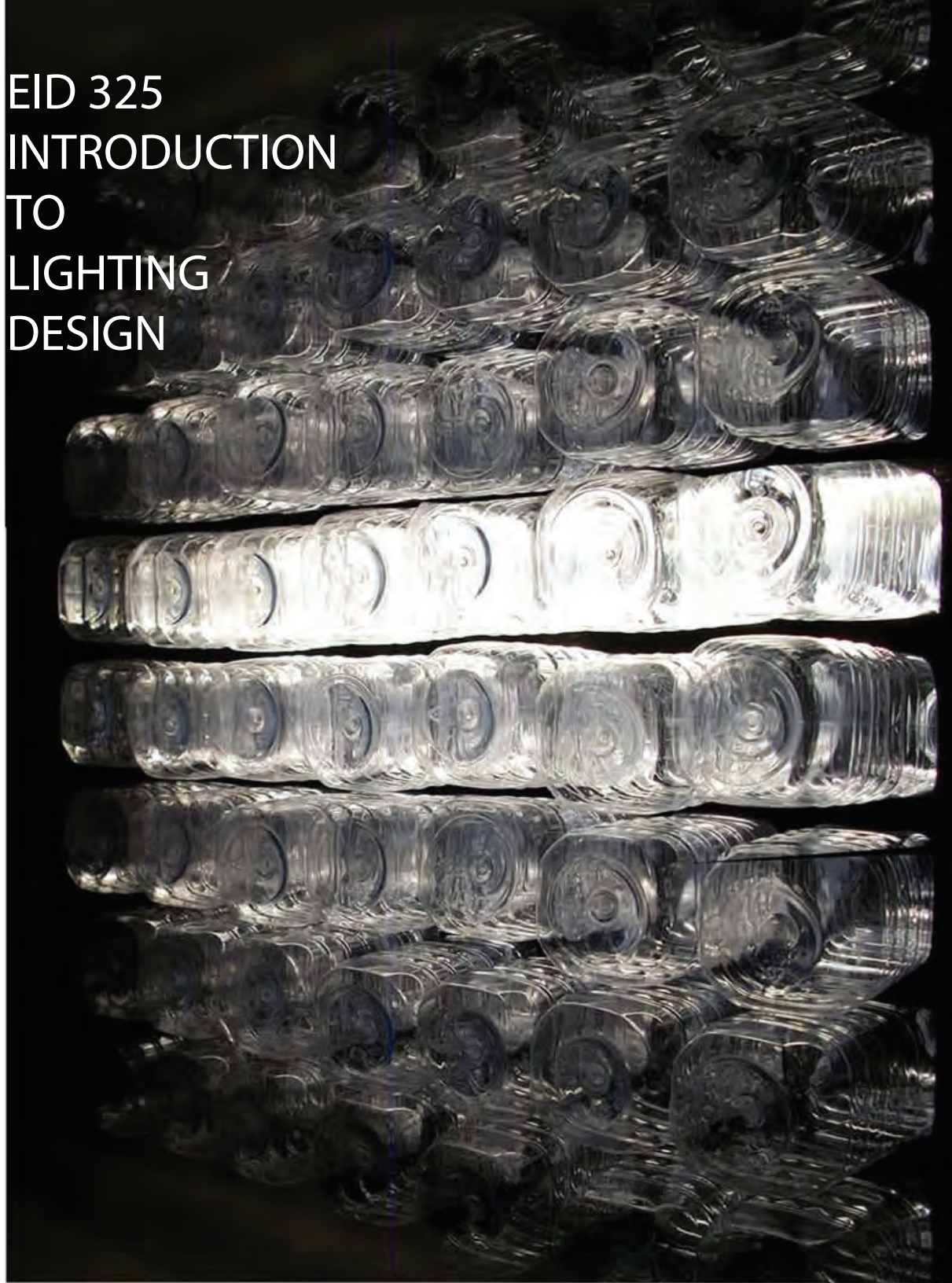
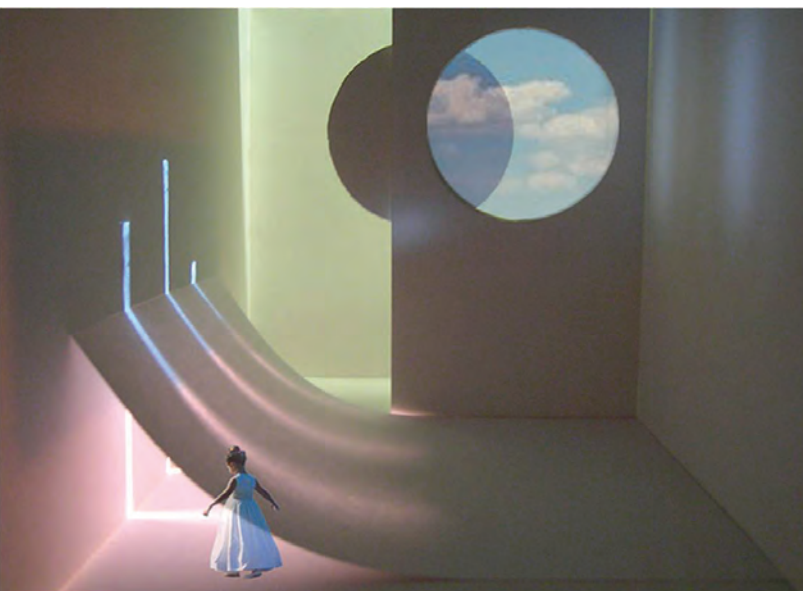

CHAMINADE UNIVERSITY OF HONOLULU
ENVIRONMENTAL + INTERIOR DESIGN
SPRING 2020
EID 325 Introduction to Lighting Design
Class hours: Tu, Th 8:30 am – 9:50 am

SYLLABUS

EID 325 INTRODUCTION TO LIGHTING DESIGN

Instructor:
Junghwa K. Suh , D.Arch
Office hours: MW 12:30 – 1:30 or by appointment
Office: Eiben 208
Office phone: 739-8590
Email: Junghwa.suh@chaminade.edu





COURSE DESCRIPTION

Introduction to the theory, practice and application of lighting design including the analysis and interpretation of quality of lighting design in an interior environment. History of lighting advancements and industry terminology will be researched and various luminaire products and new technology will be discussed. This course also serves as an introduction to the use of both daylighting and electric lighting in various functions of interior space. Qualitative and quantitative measures of lighting will be explored as well as effective use of lighting in working with problem-solving design concepts. Students will learn to take lighting as one of key design elements in spatial design for creating a functional, safe, environmentally efficient and sensitive, and aesthetically pleasing interior environment.

Offered annually.

Pre-requisites: Admission to the major or consent of instructor

CLASS FORMAT

This course is an introduction to fundamental lighting design principles, methods and their application in the field of interior design. During the semester we will explore creative use of daylighting and electrical lighting in various functions of interior space. Development of technical skills will also be an important component of the course. You will also be required to keep a **lighting design sketch journal**.

In-class participation and collaboration are essential. The major aspect of any design endeavor is the ability to present your own work in an articulate and coherent manner, both verbally and visually. To that end, the exchange of ideas and feedback from your peers will be invaluable to your development, as well as help you develop your critical thinking. Projects will be worked on in/outside of class time, during which we will have private or group critiques. Projects require your ability in both physical and digital model-building. You will be required to bring lecture notebook every class and be prepared to use computer to research, model-building, conduct technical drawing.

Total 2 quizzes will be given to evaluate your understanding of course materials throughout the semester. There will be three design projects during the course of the semester. Each project will help you to explore different types and various functional use of lighting.

Analysis On-the-Go Exercise

students will be required to share photos of specific lighting effects that are learned from class through our class Instagram page ([@cuhld](#)). All students are required to share photos and provide a short description of capturing the effectiveness of lighting design in an interior space. This will help you to critically think and analyze lighting design elements and principles in terms of functionality and aesthetics.



LEARNING OBJECTIVES AND OUTCOMES students should be able to:

- Understand and apply lighting design vocabulary, concepts & principles to Interior design [CIDA standard 10, 11, 12] [PO 2,3,4]
- Comprehend and understand basic Reflected Ceiling Plan (RCP) and technical symbols [CIDA standard 9,15] [PO 1, 2,3,5]
- Develop a wide variety of luminaires application to enhance the quality of Interior space [CIDA standard 7, 13, 14, 16] [PO 2, 4]
- Demonstrate critical thinking/analytical skills for integrating daylighting, electrical lighting and sustainable design practice [CIDA standards 8, 10] [PO 2,3]

EVALUATION CRITERIA

- quality and creativity of lighting design work
- thoroughness and craft in presentation
- technical proficiency
- contribution of ideas and engagement in class
- ability to collaborate effectively and respectfully with others
- willingness to experiment and to challenge yourself
- rigor ; - professional demeanor

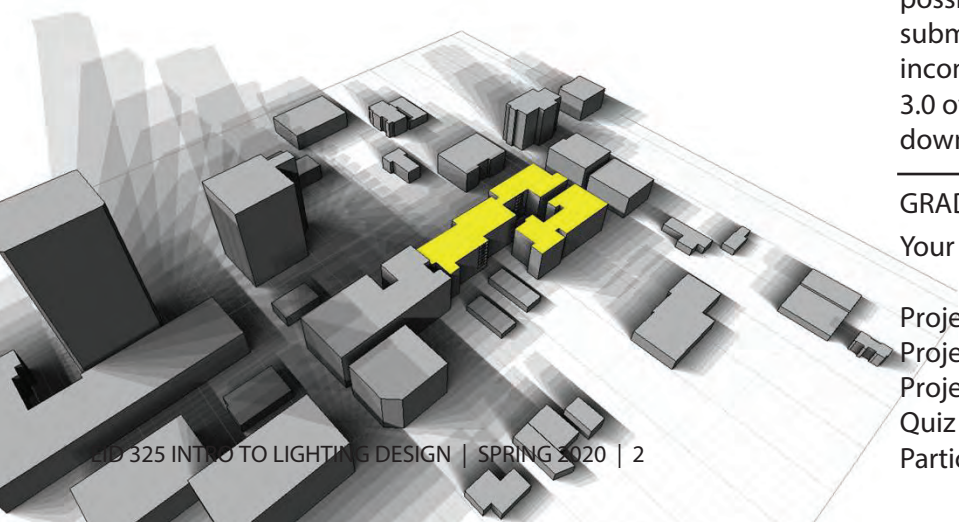
Each individual has his/her own voice which makes them unique. Imitation or conformity will compromise both your grade, and your individuality. Value is placed on originality, conviction, and autonomous thought. That said however, you are encouraged to work with others as much as possible and share ideas as we have both individual and group projects. This process will help to strengthen your work far more than by keeping your ideas to yourself.

This is a demanding and challenging course, and participation implies 100% commitment. Should you have to miss a class, please inform me in advance when possible. You will be responsible to make up the work. All projects must be complete and submitted **on time**, unless otherwise arranged. Any work not submitted on time or that is incomplete will result in 0.1 point subtracted from your overall project grade GPA (e.g., a 3.0 overall GPA will be lowered to 2.9). Any unexcused late submissions will be marked down by one letter grade.

GRADING

Your final grade will be weighted as follows:

Project #1	15%	} = 100%
Project #2	25%	
Project #3	25%	
Quiz (2)	30%	
Participation	5%	





REQUIRED MATERIALS

- all materials from EID 200 and 202 courses
- personal design book
- project binder (for each project)
- instructor will ask you to bring certain materials based on specific learning content each week.

RECOMMENDED TEXT

Livingston, J. (2014). *Designing with Light*. 1st ed. NJ: Wiley.

REFERENCES

- Winship, S. (2011). *Fundamentals of Lighting*. 2nd ed. NY: Fairchild.
- Gordon, G. & Nuckolls, J. (2003). *Interior Lighting for Designers*. 4th ed.
- Karlen, M. & Benya, J. (2004). *Lighting Design Basics*. Wiley.
- Rea, M. (2000). *The IESNA Lighting Handbook*; 9th ed. Illuminating Engineering Society of North America
- Russell, S. (2008). *The Architecture of Light*. La Jolla, CA; Conceptnine
-

EID PROGRAM OUTCOMES

- 1) Professionalism – understand, apply and participate in ethical design practices on a personal, project, peer and industry-wide level. (CIDA 5, 6, 9)

- 2) Process – ability to identify problems/challenges and demonstrate an understanding of the complete design process from conception to installation, execute documentation supporting design decisions and effect comprehensive, creative, and functional design solutions. (CIDA 4, 5, 7, 8, 9, 11, 13, 14, 15, 16)

- 3) Principles & Priorities – integration of pedagogy, research, historic contexts, theory, and interdisciplinary collaboration to effectively and creatively analyze, evaluate and execute best design practices resulting in functional and aesthetically inspiring design. (CIDA 8, 9, 10, 11, 12, 13)

- 4) Public & Environmental Protection – demonstrate an understanding of the concepts, resources and implications of design decisions relative to the human interaction, technological impact and ecological balance of the built environment. (CIDA 4, 7, 12, 13, 14, 15, 16)

- 5) Presentation – demonstrate ability to communicate design concepts and problem solving justifications through written, oral and a variety of visual media. (CIDA 6, 9)

Additional Attachments:
 Academic Honesty
 ADA Accommodation
 Title IX Compliance

CUH EID Professional Code of Conduct

Characteristics of a Marianist Education

The following are characteristics of the approach to education engaged at Marianist schools, including Chaminade University:

- Educate for formation in faith
- Provide an integral quality education
- Educate in family spirit
- Educate for service, justice and peace
- Educate for adaptation and change

Native Hawaiian Values

Education is an integral value in both Marianist and Native Hawaiian culture. Both recognize the transformative effect of a well-rounded, value-centered education on society, particularly in seeking justice for the marginalized, the forgotten, and the oppressed, always with an eye toward God (Ke Akua). This is reflected in the 'Ōlelo No'eau (Hawaiian proverbs) and Marianist core beliefs:

1. Educate for Formation in Faith (Mana) E ola au i ke akua ('Ōlelo No'eau 364) May I live by God
2. Provide an Integral, Quality Education (Na'auao) Lawe i ka ma'alea a kū'ono'ono ('Ōlelo No'eau 1957) Acquire skill and make it deep
3. Educate in Family Spirit ('Ohana) 'Ike aku, 'ike mai, kōkua aku kōkua mai; pela iho la ka nohana 'ohana ('Ōlelo No'eau 1200) Recognize others, be recognized, help others, be helped; such is a family relationship
4. Educate for Service, Justice and Peace (Aloha) Ka lama kū o ka no'eau ('Ōlelo No'eau 1430) Education is the standing torch of wisdom
5. Educate for Adaptation and Change (Aina) 'A'ohe pau ka 'ike i ka hālau ho'okahi ('Ōlelo No'eau 203) All knowledge is not taught in the same school

Academic Honesty

Students are responsible for honoring academic honesty at Chaminade by not participating in any act of dishonesty and by reporting any incidence of dishonesty to an instructor or to a University official. Academic dishonesty may include theft of records or examinations, alteration of grades, and plagiarism. Questions of academic dishonesty in a particular class are first reviewed by the instructor who must make a report with recommendations to the Dean of Humanities and Fine Arts. Consequences for academic dishonesty may range from an “F” grade for the work in question to an “F” grade for the course to suspension or dismissal from the University.

Violations of Academic Integrity: Violations of the principle include, but are not limited to:

- Cheating: Intentionally using or attempting to use unauthorized materials, information, notes, study aids, or other devices in any academic exercise.
- Fabrication and Falsification: Intentional and unauthorized alteration or invention of any information or citation in an academic exercise. Falsification is a matter of inventing or counterfeiting information for use in any academic exercise.
- Multiple Submissions: The submission of substantial portions of the same academic work for credit (including oral reports) more than once without authorization.
- Plagiarism: Intentionally or knowingly presenting the work of another as one’s own (i.e., without proper acknowledgment of the source).
- Abuse of Academic Materials: Intentionally or knowingly destroying, stealing, or making inaccessible library or other academic resource materials.
- Complicity in Academic Dishonesty: Intentionally or knowingly helping or attempting to help another to commit an act of academic dishonesty.

Plagiarism includes, but is not limited to:

- Copying or borrowing liberally from someone else’s work without his/her knowledge or permission; or with his/her knowledge or permission and turning it in as your own work.
- Copying of someone else’s exam or paper.
- Allowing someone to turn in your work as his or her own.
- Not providing adequate references for cited work.
- Copying and pasting large quotes or passages without properly citing them.

Technical Assistance

- Search for help on specific topics at help.instructure.com
- Contact the Chaminade IT Helpdesk for technical issues: helpdesk@chaminade.edu, or call (808) 735-4855

Inclusive Education

The University is committed to providing reasonable accommodations for all persons with disabilities. Students who need accommodations must be registered with Student Disability Services. Students with special needs who meet criteria for the Americans with Disabilities Act (ADA) provisions must provide written documentation of the need for accommodations from the Counseling Center **by the end of week three of the class**, in order for the instructor to plan accordingly. Failure to provide written documentation will prevent your instructor from making the necessary accommodations.

“Counseling service center is located in the Student Support Services Building, Room 101. The center is open Monday through Friday, 8:30am-4:30pm. If you are inquiring about beginning counseling and/or ADA accommodations, please **contact the Counseling Center at (808) 735-4845 or send an e-mail to counselingcenter@chaminade.edu**.” (<https://chaminade.edu/student-life/counseling-services/>)

Title IX Compliance (A Healthy Student Environment)

Chaminade University of Honolulu recognizes the inherent dignity of all individuals and promotes respect for all people. Sexual misconduct, physical and/or psychological abuse will NOT be tolerated at CUH. If you have been the victim of sexual misconduct, physical and/or psychological abuse, we encourage you to report this matter promptly. As a faculty member, I am interested in promoting a safe and healthy environment, and should I learn of any sexual misconduct, physical and/or psychological abuse, I must report the matter to the Title IX Coordinator. Should you want to speak to a confidential source you may contact the following:

- Chaminade Counseling Center 808 735-4845

Chaminade University of Honolulu – Environmental + Interior Design Program

PROFESSIONAL CODE OF CONDUCT

Students of Chaminade University's Environmental + Interior Design Program (CUH-EID) are expected to maintain professional standards of behavior during their tenure here. As guidelines, CUH-EID has adopted the following protocols:

CLASSROOM BEHAVIOR

- Cell phone use in class (calls, texting, emailing) is prohibited; cell phones ringers must be turned off at all times except in case of emergency. If making a call is absolutely necessary, then please step outside the classroom to do so.
- When class is in session, you are expected to show courtesy to your instructor as well as to other students. If your behavior is deemed disruptive, you will be asked to leave the class and consequently receive an unexcused absence for that day.
- All assigned work should be completed by the beginning of the class period for which it is to be presented or submitted. Working on homework, presentations, etc. while an instructor or guest speaker is lecturing, or while students are presenting in class, is disrespectful and will **NOT** be tolerated.
- If you were to bring someone (your child(en), friends, parents) to class, you must ask a permission of your instructor in advance.

CLASS ATTENDANCE & ASSIGNMENTS

- Three unexcused absences during the course of the semester will result in one letter grade demotion for the course (i.e. if your grade is "B," it can be demoted to "C"). Similarly, six unexcused tardiness will result in one letter grade demotion for the course.
- Failure to attend presentations or exams, without informing the instructor in advance, will result in an F for the exam/project; failure to attend a final presentation, final exam or final project submission without informing the instructor in advance will result in an "F" for the course.
- Students should always inform the instructor in 2 days advance (in writing or by email) of any anticipated absences, tardiness, or irregular/unanticipated scheduling conflicts (e.g., jury duty, team sport commitment, etc.) Do not schedule medical or personal appointments during scheduled class time. If you have to miss a class because of illness or health issue, you must provide an official doctor's note. Otherwise, it will be considered as an unexcused absence.
- Assignments from a missed class must be made up by the next class meeting unless an extension has been arranged with the instructor. Do not expect an instructor to repeat a

lecture for you; students must arrange with a fellow student to pick up class materials, lecture notes, homework assignments, exercises, etc.

- Assignments handed in late will not be accepted unless arranged in advance with the instructor; 5 points will be deducted from the total number of points for each day the assignment is late beyond the prescribed due date.

USE OF FACILITIES

- Only beverages in **sealed** containers are allowed in the EID assigned studios/classrooms; in rooms with computers, beverages must be kept on the floor, away from the computer equipment and outlets.
- Meals should be taken in the EID Student Resource Center (Eiben 109), not in the studio/classroom; however, dry snacks will be permitted as long as workstations are kept clean and orderly.
- Clean up after yourselves in CAD studios, classrooms, the materials library, the kitchen area, the resource center, and the print room.
- Any damage to work stations or equipment will be charged to the student; if the person cannot be readily determined, the class(es) using the studio/classroom will bear the expense of the repairs collectively.

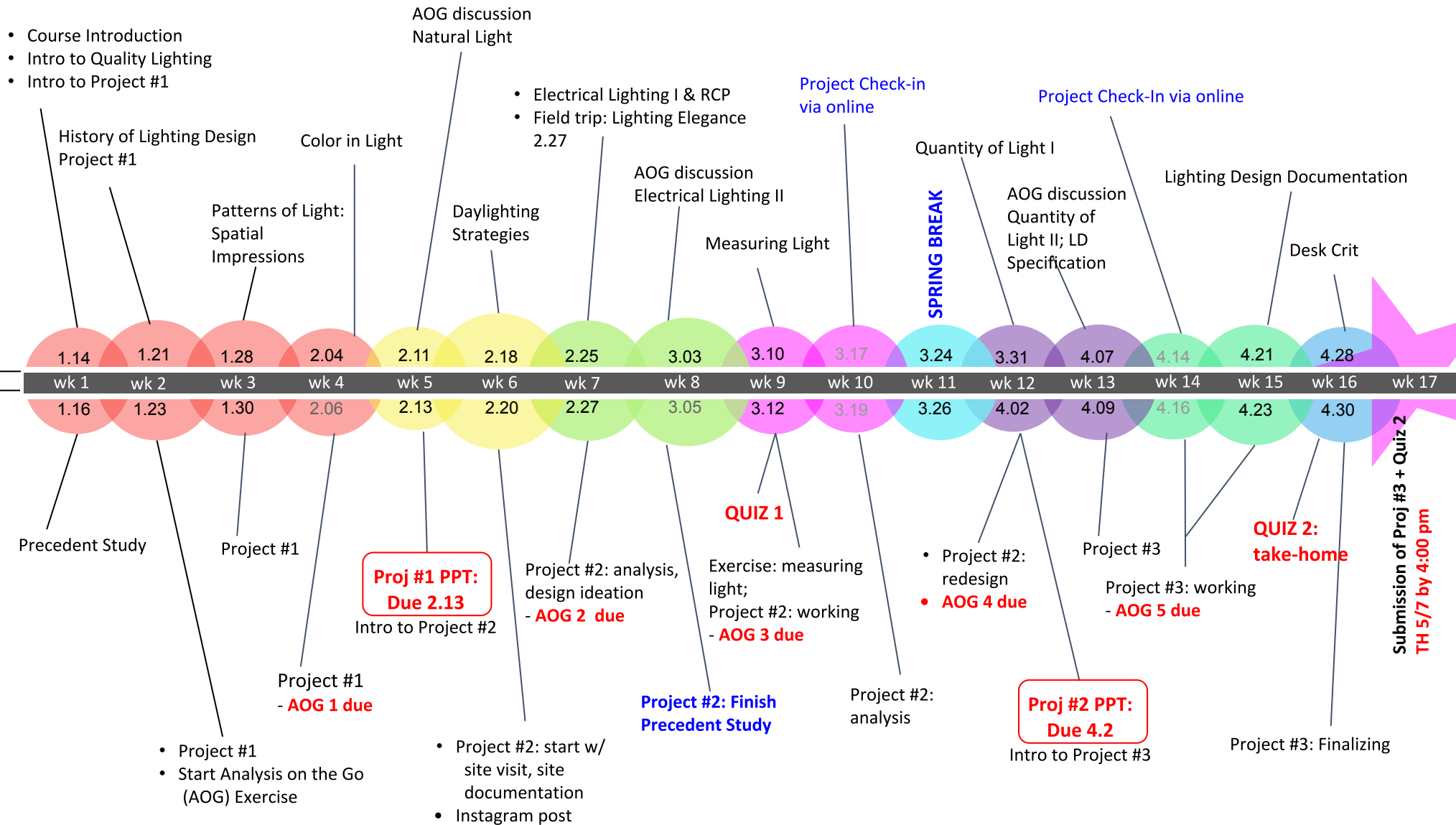
PERSONAL STANDARDS

- Students should dress in a professional manner when attending any public functions on behalf of the school, on field trips/site visits, or when guests visit the class. You are representing the EID Program, Chaminade University, and most importantly, yourself to your future constituents: employers, colleagues, contractors, clients, etc.
- Students must be prepared with all materials required for class; inability to work during the class will result in an unexcused absence for the day.
- Cheating on any exam or major assignment will result in automatic failure of the course.

I, _____ have read, understand, agree, and respect Syllabus, Schedule, Academic Honesty, Disability Access, Title IX Compliance, and the terms of CUH-EID Professional Code of Conduct.

Student Signature: _____ Date: _____

EID 325 Course Schedule



EID 325 Designer's Task